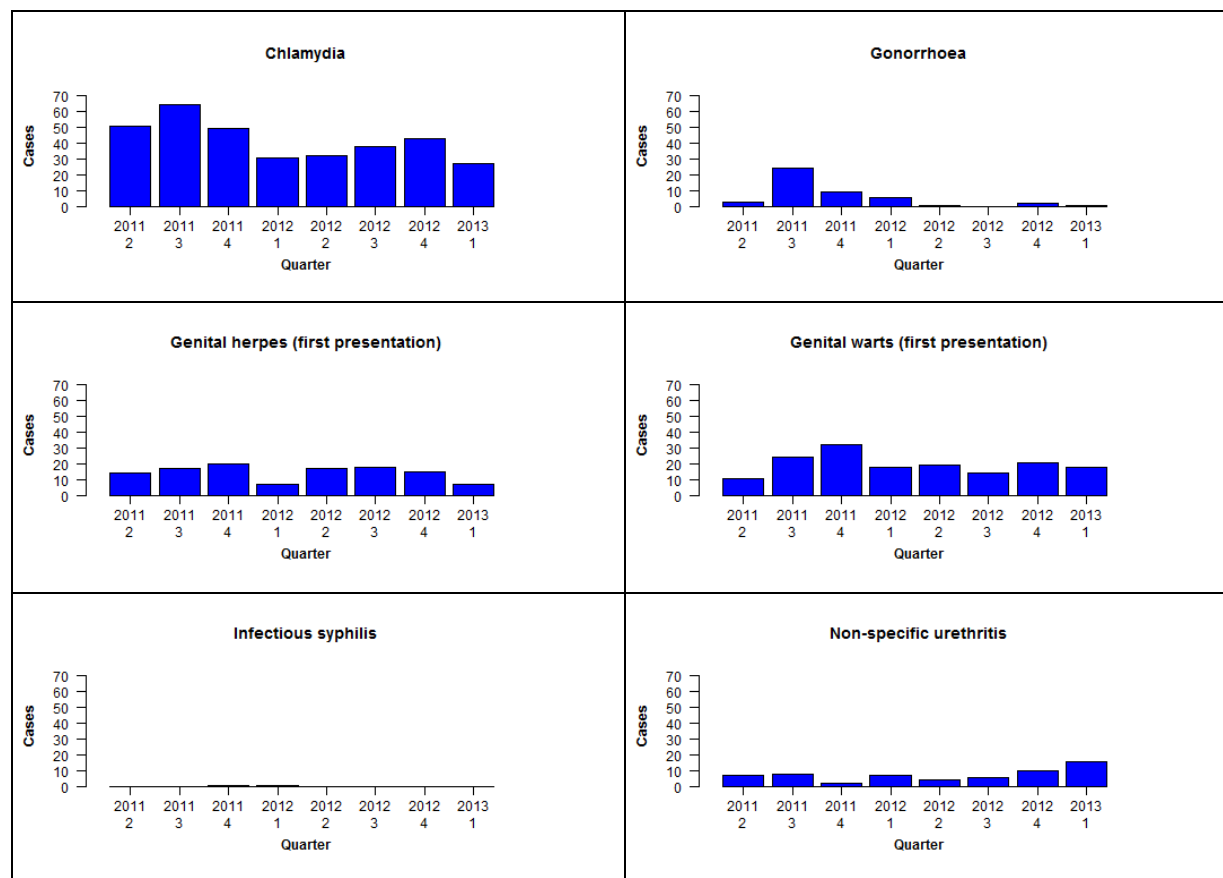


Sexual health clinic (SHC) surveillance of STIs: January-March 2013

Quarterly case counts in participating SHCs by disease, April 2011 to March 2013



No cases of chancroid, granuloma inguinale or lymphogranuloma venereum were reported during the last quarter

Note: Clinic was closed for 3 weeks during Quarter 1 2013

Quarterly case counts in participating SHCs by disease, April 2011 to March 2013

	Q2 2011	Q3 2011	Q4 2011	Q1 2012	Q2 2012	Q3 2012	Q4 2012	Q1 2013
Chlamydia	51	64	49	31	32	38	43	27
Gonorrhoea	3	24	9	6	1	0	2	1
Genital herpes (first presentation)	14	17	20	7	17	18	15	7
Genital warts (first presentation)	11	24	32	18	19	14	21	18
Infectious syphilis	0	0	1	1	0	0	0	0
Non-specific urethritis	7	8	2	7	4	6	10	16