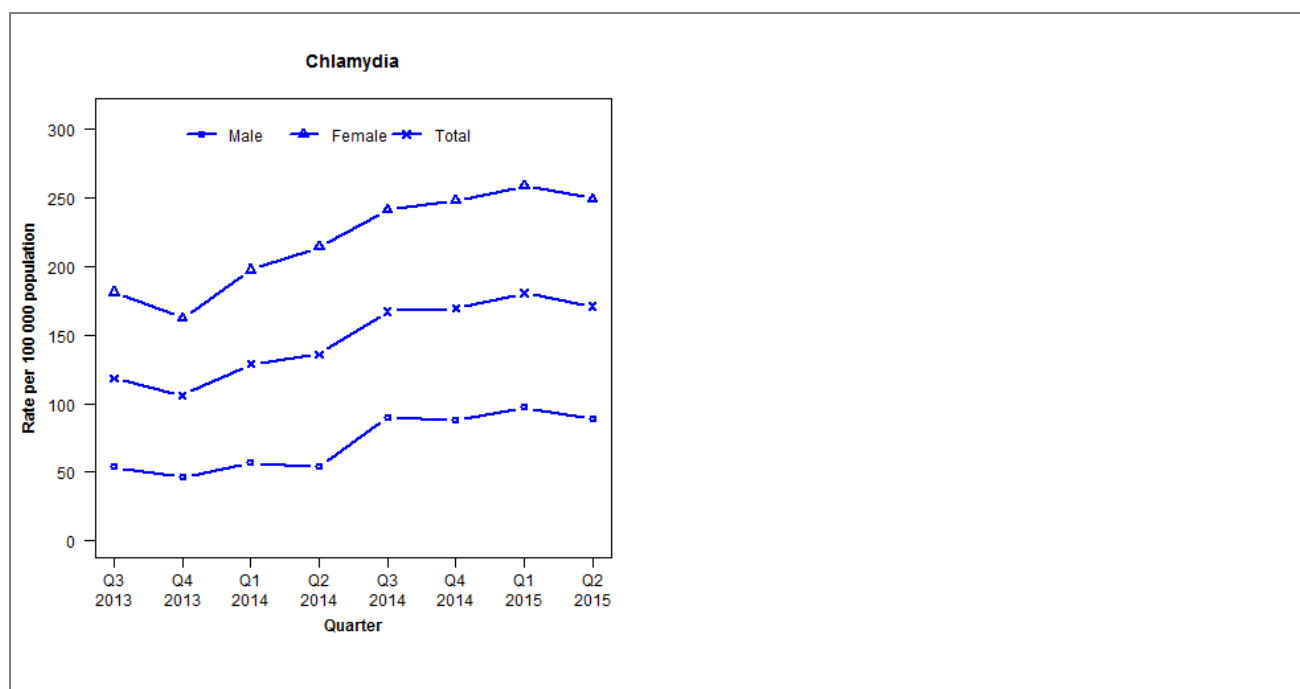


Laboratory surveillance of chlamydia and gonorrhoea: April - June 2015

Quarterly chlamydia and gonorrhoea rates (female, male and total population), Jul 2013 to Jun 2015



Denominator = Statistics New Zealand mid-year population estimates

Note: Data processing methods allow for exclusion of repeat tests. Additional 2014 data received has been included may have impacted slightly on the counts produced. Gonorrhoea rates are not presented as data were incomplete in 2013 and 2014.

Number of lab confirmed chlamydia cases (female, male and total population) and number of tests per 100 000 population, July 2013 to June 2015

	Q3 2013	Q4 2013	Q1 2014	Q2 2014	Q3 2014	Q4 2014	Q1 2015	Q2 2015
Number of lab-confirmed cases¹	188	168	214	226	278	282	300	284
<i>Female</i>	146	131	168	182	205	211	220	212
<i>Male</i>	42	36	46	44	73	71	79	72
Tests per 100 000 population²	1472	1363	1387	1604	1724	1765	1892	1789

¹Total includes cases where sex is not reported

²Denominator = Statistics New Zealand mid-year population estimates

Number of lab confirmed gonorrhoea cases (female, male and total population) and number of tests per 100 000 population, July 2013 to June 2015

	Q3 2013	Q4 2013	Q1 2014	Q2 2014	Q3 2014	Q4 2014	Q1 2015	Q2 2015
Number of lab-confirmed cases¹	*	*	*	*	*	*	26	45
<i>Female</i>	*	*	*	*	*	*	17	28
<i>Male</i>	*	*	*	*	*	*	9	17
Tests per 100 000 population²	*	*	*	*	*	*	2644	2484

¹Total includes cases where sex is not reported

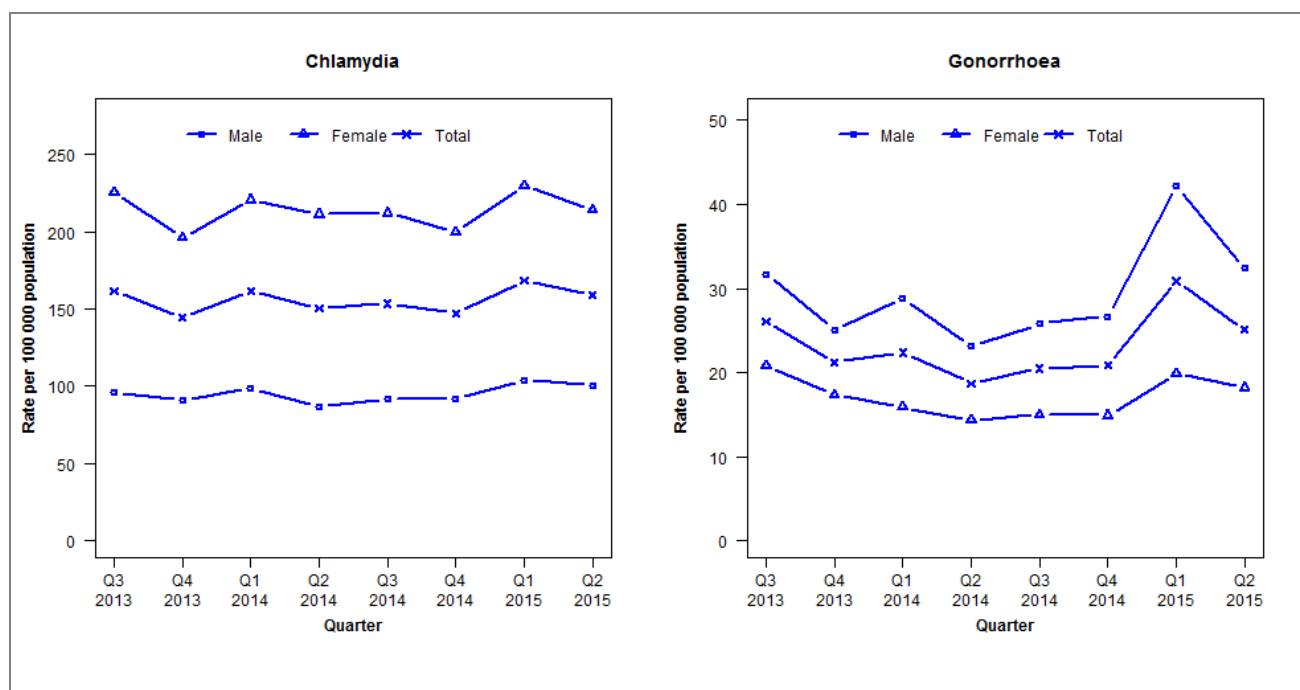
²Denominator = Statistics New Zealand mid-year population estimates

AUCKLAND REGION

Auckland, Counties Manukau and Waitemata DHBs

Laboratory surveillance of chlamydia and gonorrhoea: April - June 2015

Quarterly chlamydia and gonorrhoea rates (female, male and total population), Jul 2013 to Jun 2015



Denominator = Statistics New Zealand mid-year population estimates

Note: Data processing methods allow for exclusion of repeat tests. Data not received from Waitemata DHB for all quarters in 2013.

Number of lab confirmed chlamydia cases (female, male and total population) and number of tests per 100 000 population, July 2013 to June 2015

	Q3 2013	Q4 2013	Q1 2014	Q2 2014	Q3 2014	Q4 2014	Q1 2015	Q2 2015
Number of lab-confirmed cases¹	2499	2234	2492	2326	2369	2270	2598	2452
<i>Female</i>	1768	1539	1737	1665	1670	1575	1809	1688
<i>Male</i>	731	693	748	655	692	694	786	762
Tests per 100 000 population²	2555	2366	2534	2554	2634	2550	2737	2721

¹Total includes cases where sex is not reported

²Denominator = Statistics New Zealand mid-year population estimates

Number of lab confirmed gonorrhoea cases (female, male and total population) and number of tests per 100 000 population, July 2013 to June 2015

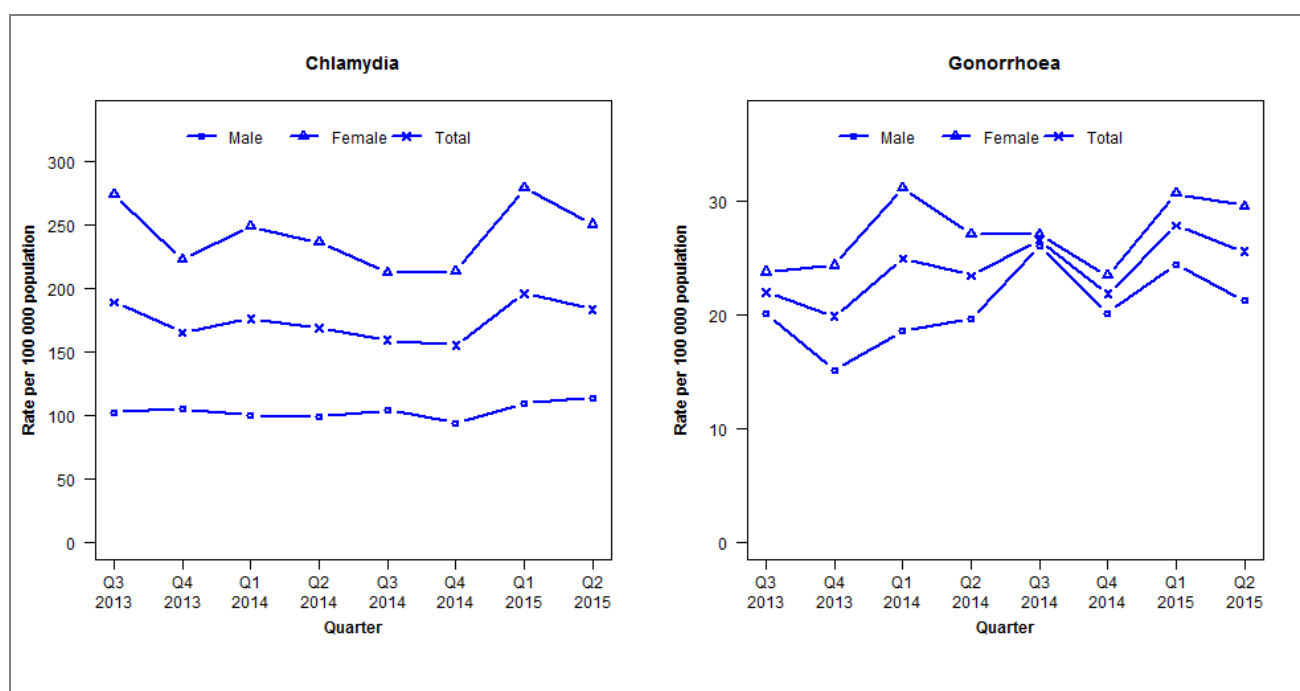
	Q3 2013	Q4 2013	Q1 2014	Q2 2014	Q3 2014	Q4 2014	Q1 2015	Q2 2015
Number of lab-confirmed cases¹	404	328	345	288	316	322	477	388
<i>Female</i>	163	136	125	113	118	117	157	143
<i>Male</i>	241	191	218	175	195	202	319	245
Tests per 100 000 population²	2877	2648	2841	2795	2898	2819	3030	3002

¹Total includes cases where sex is not reported

²Denominator = Statistics New Zealand mid-year population estimates

Laboratory surveillance of chlamydia and gonorrhoea: April - June 2015

Quarterly chlamydia and gonorrhoea rates (female, male and total population), Jul 2013 to Jun 2015



Denominator = Statistics New Zealand mid-year population estimates

Note: Data processing methods allow for exclusion of repeat tests. Additional 2014 data received has been included may have impacted slightly on the counts produced.

Number of lab confirmed chlamydia cases (female, male and total population) and number of tests per 100 000 population, July 2013 to June 2015

	Q3 2013	Q4 2013	Q1 2014	Q2 2014	Q3 2014	Q4 2014	Q1 2015	Q2 2015
Number of lab-confirmed cases¹	707	617	677	649	612	597	753	705
<i>Female</i>	518	422	488	463	416	419	547	491
<i>Male</i>	189	194	188	186	196	177	206	214
Tests per 100 000 population²	2165	1960	2025	2044	2072	1956	2225	2133

¹Total includes cases where sex is not reported

²Denominator = Statistics New Zealand mid-year population estimates

Number of lab confirmed gonorrhoea cases (female, male and total population) and number of tests per 100 000 population, July 2013 to June 2015

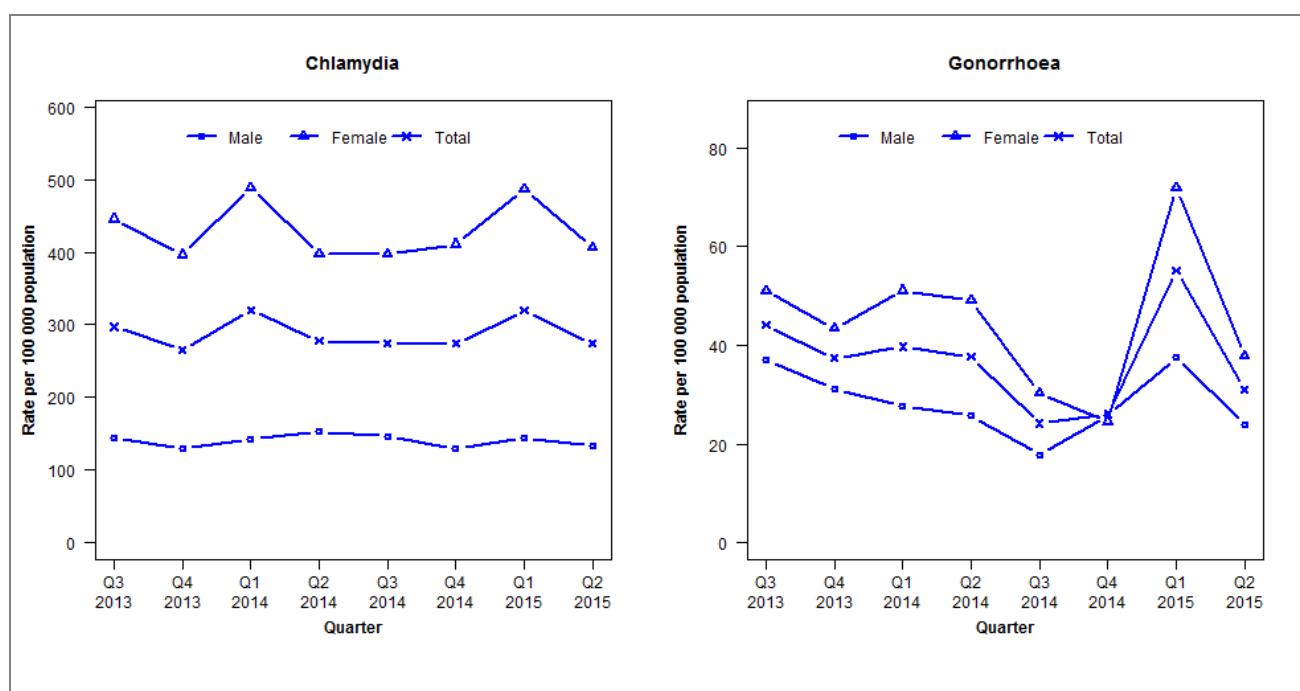
	Q3 2013	Q4 2013	Q1 2014	Q2 2014	Q3 2014	Q4 2014	Q1 2015	Q2 2015
Number of lab-confirmed cases¹	82	74	96	90	102	84	107	98
<i>Female</i>	45	46	61	53	53	46	60	58
<i>Male</i>	37	28	35	37	49	38	46	40
Tests per 100 000 population²	2900	2508	2502	2515	2525	2401	2651	2494

¹Total includes cases where sex is not reported

²Denominator = Statistics New Zealand mid-year population estimates

Laboratory surveillance of chlamydia and gonorrhoea: April - June 2015

Quarterly chlamydia and gonorrhoea rates (female, male and total population), Jul 2013 to Jun 2015



Denominator = Statistics New Zealand mid-year population estimates

Note: Data processing methods allow for exclusion of repeat tests. Additional 2014 data received has been included and may have impacted slightly on the counts and rates produced. NAAT Gonorrhoea testing introduced for Pathlab Rotorua 1 July 2013.

Number of lab confirmed chlamydia cases (female, male and total population) and number of tests per 100 000 population, July 2013 to June 2015

	Q3 2013	Q4 2013	Q1 2014	Q2 2014	Q3 2014	Q4 2014	Q1 2015	Q2 2015
Number of lab-confirmed cases¹	310	277	331	287	284	283	330	283
<i>Female</i>	236	210	258	210	210	217	257	215
<i>Male</i>	74	66	72	77	74	65	73	67
Tests per 100 000 population²	2801	2602	2858	2661	2782	2654	3022	2817

¹Total includes cases where sex is not reported

²Denominator = Statistics New Zealand mid-year population estimates

Number of lab confirmed gonorrhoea cases (female, male and total population) and number of tests per 100 000 population, July 2013 to June 2015

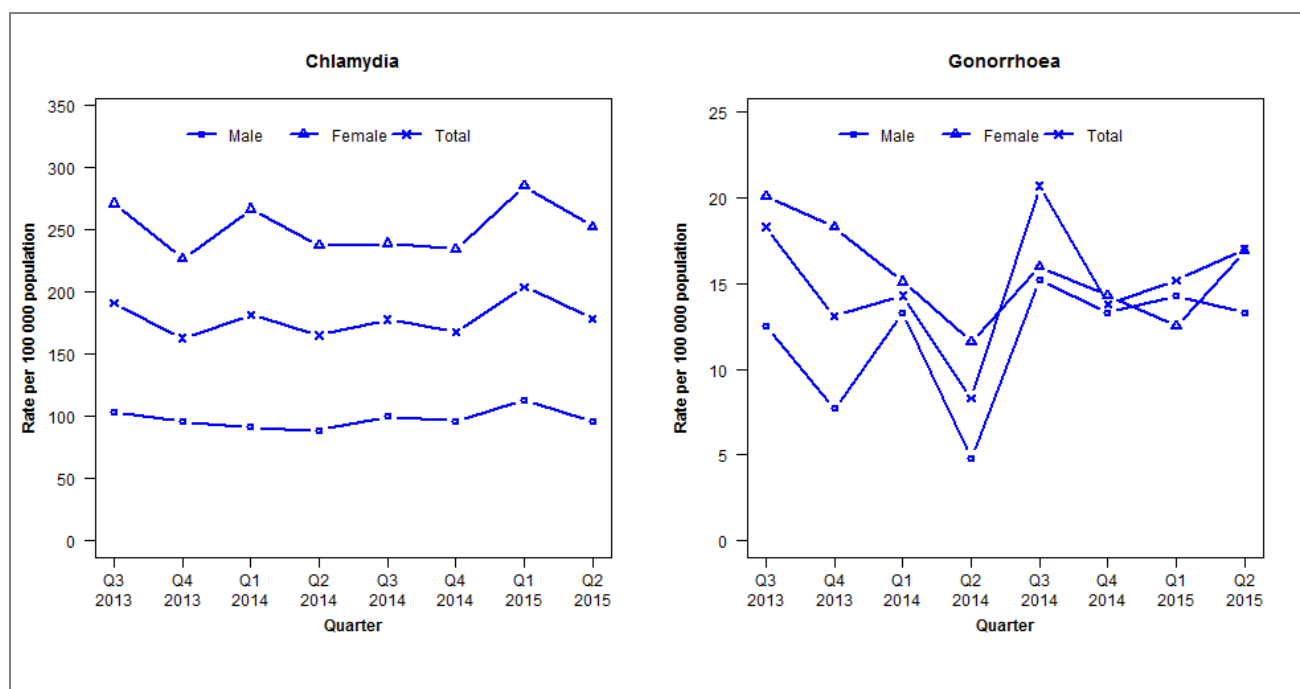
	Q3 2013	Q4 2013	Q1 2014	Q2 2014	Q3 2014	Q4 2014	Q1 2015	Q2 2015
Number of lab-confirmed cases¹	46	39	41	39	25	27	57	32
<i>Female</i>	27	23	27	26	16	13	38	20
<i>Male</i>	19	16	14	13	9	13	19	12
Tests per 100 000 population²	3048	2688	2899	2671	2791	2665	3040	2825

¹Total includes cases where sex is not reported

²Denominator = Statistics New Zealand mid-year population estimates

Laboratory surveillance of chlamydia and gonorrhoea: April - June 2015

Quarterly chlamydia and gonorrhoea rates (female, male and total population), Jul 2013 to Jun 2015



Denominator = Statistics New Zealand mid-year population estimates

Note: Data processing methods allow for exclusion of repeat tests. Additional 2014 data received has been included and may have impacted slightly on the counts and rates produced. NAAT (nucleic acid amplification testing) for gonorrhoea testing was introduced in Q3 2013.

Number of lab confirmed chlamydia cases (female, male and total population) and number of tests per 100 000 population, July 2013 to June 2015

	Q3 2013	Q4 2013	Q1 2014	Q2 2014	Q3 2014	Q4 2014	Q1 2015	Q2 2015
Number of lab-confirmed cases¹	407	347	395	359	386	364	443	388
<i>Female</i>	296	248	299	266	268	263	320	283
<i>Male</i>	107	99	96	93	105	101	119	101
Tests per 100 000 population²	2027	2003	2117	1983	2092	2002	2196	2049

¹Total includes cases where sex is not reported

²Denominator = Statistics New Zealand mid-year population estimates

Number of lab confirmed gonorrhoea cases (female, male and total population) and number of tests per 100 000 population, July 2013 to June 2015

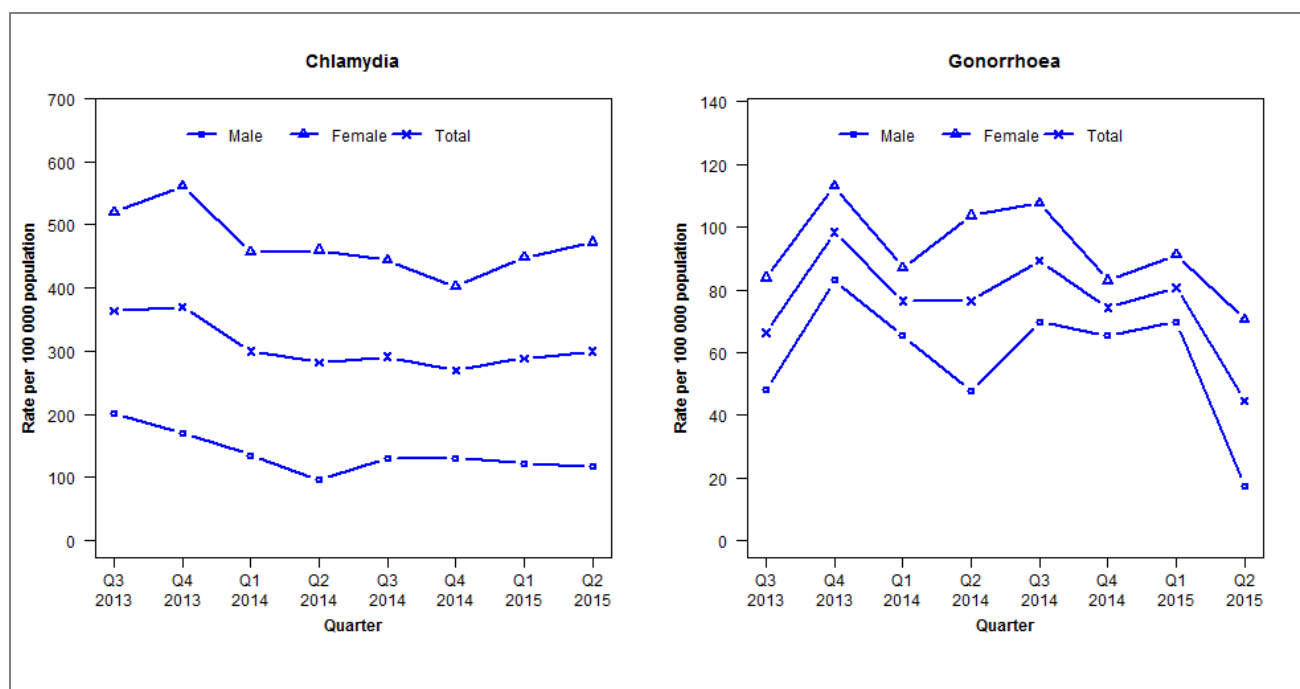
	Q3 2013	Q4 2013	Q1 2014	Q2 2014	Q3 2014	Q4 2014	Q1 2015	Q2 2015
Number of lab-confirmed cases¹	39	28	31	18	45	30	33	37
<i>Female</i>	22	20	17	13	18	16	14	19
<i>Male</i>	13	8	14	5	16	14	15	14
Tests per 100 000 population²	2011	2153	2173	1984	2093	2006	2202	2050

¹Total includes cases where sex is not reported

²Denominator = Statistics New Zealand mid-year population estimates

Laboratory surveillance of chlamydia and gonorrhoea: April - June 2015

Quarterly chlamydia and gonorrhoea rates (female, male and total population), Jul 2013 to Jun 2015



Denominator = Statistics New Zealand mid-year population estimates

Note: Data processing methods allow for exclusion of repeat tests.

Number of lab confirmed chlamydia cases (female, male and total population) and number of tests per 100 000 population, July 2013 to June 2015

	Q3 2013	Q4 2013	Q1 2014	Q2 2014	Q3 2014	Q4 2014	Q1 2015	Q2 2015
Number of lab-confirmed cases¹	170	173	141	133	137	127	136	141
<i>Female</i>	124	134	110	111	107	97	108	114
<i>Male</i>	46	39	31	22	30	30	28	27
Tests per 100 000 population²	2525	2480	2255	2205	2349	2134	2083	2171

¹Total includes cases where sex is not reported

²Denominator = Statistics New Zealand mid-year population estimates

Number of lab confirmed gonorrhoea cases (female, male and total population) and number of tests per 100 000 population, July 2013 to June 2015

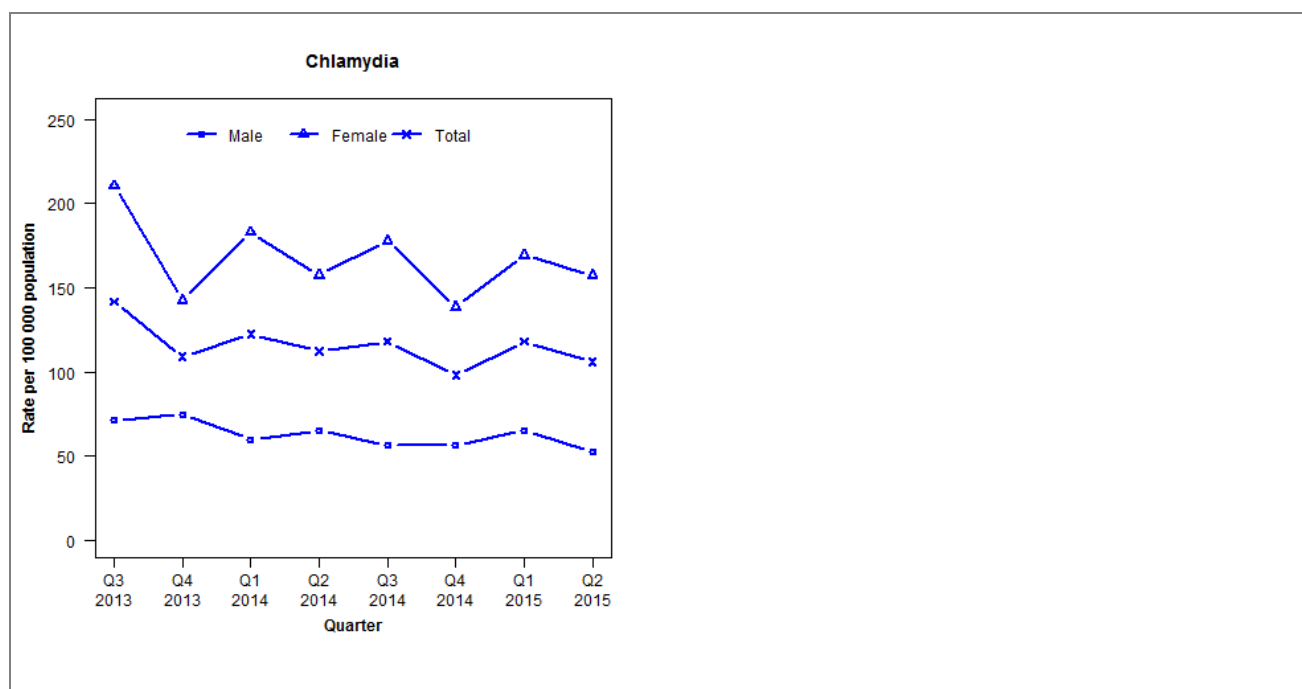
	Q3 2013	Q4 2013	Q1 2014	Q2 2014	Q3 2014	Q4 2014	Q1 2015	Q2 2015
Number of lab-confirmed cases¹	31	46	36	36	42	35	38	21
<i>Female</i>	20	27	21	25	26	20	22	17
<i>Male</i>	11	19	15	11	16	15	16	4
Tests per 100 000 population²	2499	2354	2260	2268	2383	2224	2202	2251

¹Total includes cases where sex is not reported

²Denominator = Statistics New Zealand mid-year population estimates

Laboratory surveillance of chlamydia and gonorrhoea: April - June 2015

Quarterly chlamydia and gonorrhoea rates (female, male and total population), Jul 2013 to Jun 2015



Denominator = Statistics New Zealand mid-year population estimates

Note: Data processing methods allow for exclusion of repeat tests. Gonorrhoea rates are not presented as there are fewer than five cases in many quarters.

Number of lab confirmed chlamydia cases (female, male and total population) and number of tests per 100 000 population, July 2013 to June 2015

	Q3 2013	Q4 2013	Q1 2014	Q2 2014	Q3 2014	Q4 2014	Q1 2015	Q2 2015
Number of lab-confirmed cases¹	157	121	141	129	136	113	136	122
<i>Female</i>	118	80	107	92	104	81	99	92
<i>Male</i>	39	41	34	37	32	32	37	30
Tests per 100 000 population²	2134	2011	2004	1956	2000	1893	1917	1799

¹Total includes cases where sex is not reported

²Denominator = Statistics New Zealand mid-year population estimates

Number of lab confirmed gonorrhoea cases (female, male and total population) and number of tests per 100 000 population, July 2013 to June 2015

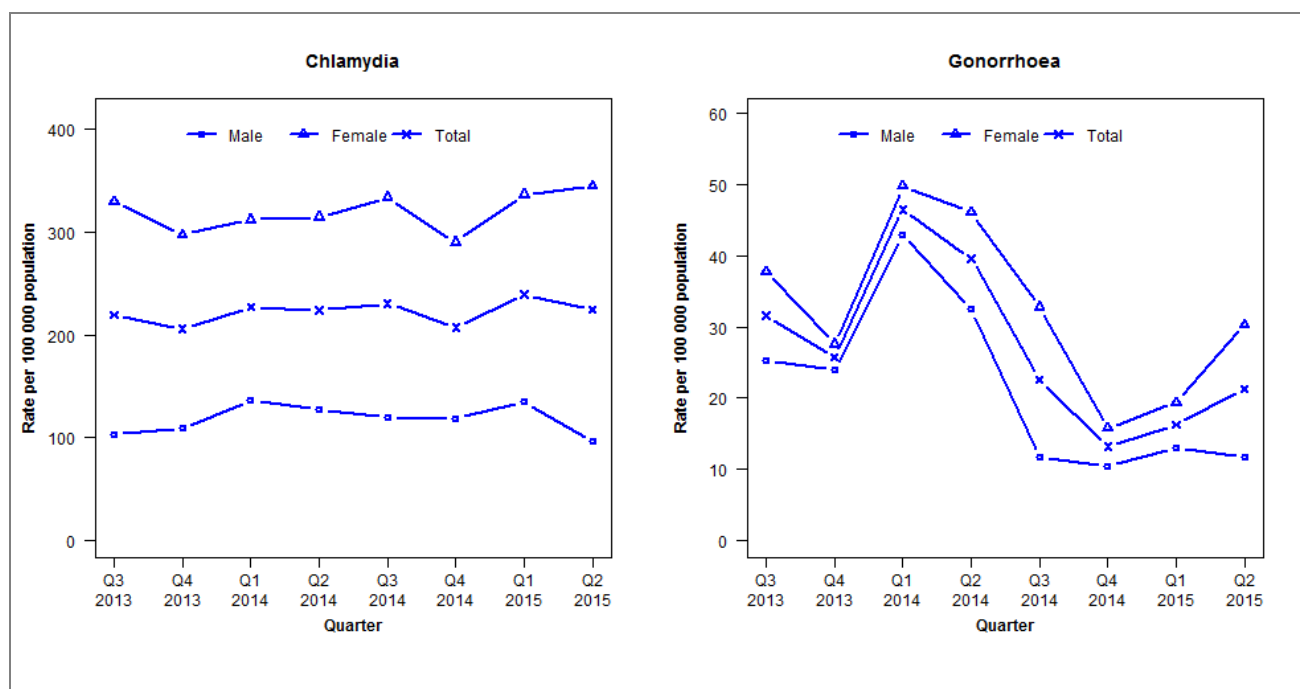
	Q3 2013	Q4 2013	Q1 2014	Q2 2014	Q3 2014	Q4 2014	Q1 2015	Q2 2015
Number of lab-confirmed cases¹	0	0	5	11	10	1	0	8
<i>Female</i>	0	0	2	5	6	0	0	4
<i>Male</i>	0	0	1	6	4	1	0	4
Tests per 100 000 population²	2557	2399	2569	2398	2524	2319	2346	2192

¹Total includes cases where sex is not reported

²Denominator = Statistics New Zealand mid-year population estimates

Laboratory surveillance of chlamydia and gonorrhoea: April - June 2015

Quarterly chlamydia and gonorrhoea rates (female, male and total population), Jul 2013 to Jun 2015



Denominator = Statistics New Zealand mid-year population estimates

Note: Data processing methods allow for exclusion of repeat tests.

Number of lab confirmed chlamydia cases (female, male and total population) and number of tests per 100 000 population, July 2013 to June 2015

	Q3 2013	Q4 2013	Q1 2014	Q2 2014	Q3 2014	Q4 2014	Q1 2015	Q2 2015
Number of lab-confirmed cases¹	340	319	362	357	367	330	381	358
<i>Female</i>	262	237	257	259	275	239	277	284
<i>Male</i>	78	82	105	98	92	91	104	74
Tests per 100 000 population²	2079	1929	1941	1918	1958	1839	2134	1974

¹Total includes cases where sex is not reported

²Denominator = Statistics New Zealand mid-year population estimates

Number of lab confirmed gonorrhoea cases (female, male and total population) and number of tests per 100 000 population, July 2013 to June 2015

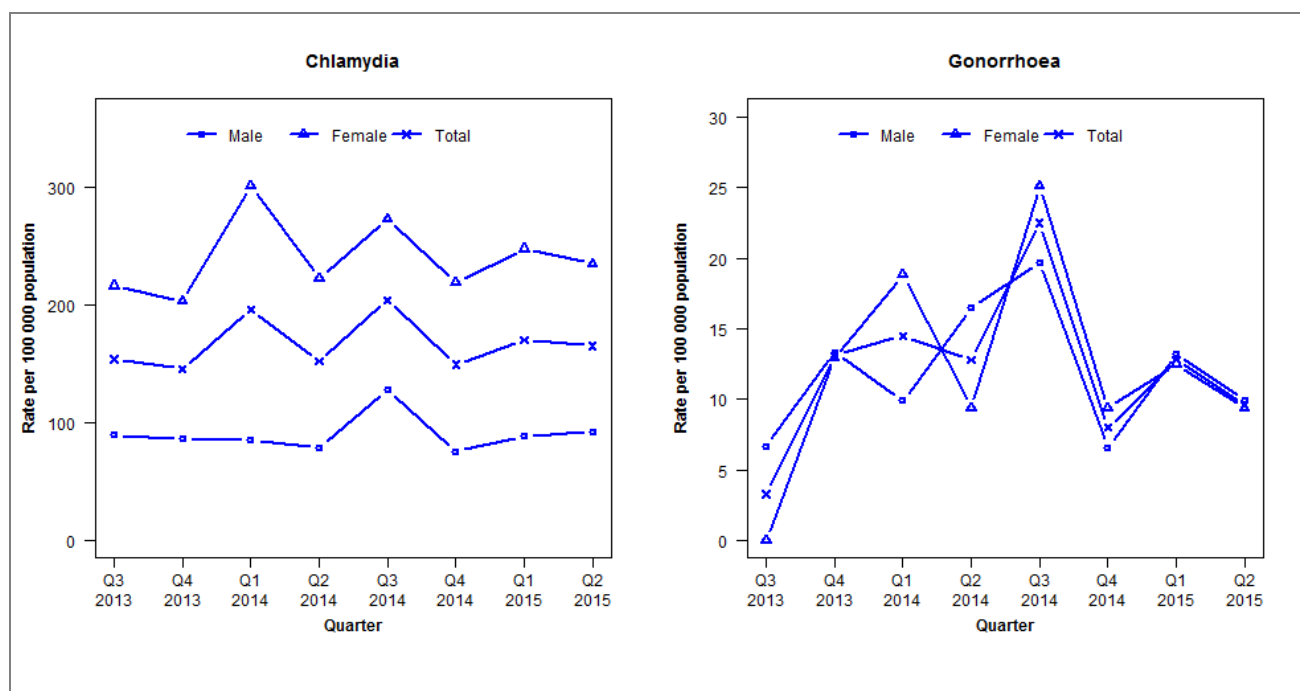
	Q3 2013	Q4 2013	Q1 2014	Q2 2014	Q3 2014	Q4 2014	Q1 2015	Q2 2015
Number of lab-confirmed cases¹	49	40	74	63	36	21	26	34
<i>Female</i>	30	22	41	38	27	13	16	25
<i>Male</i>	19	18	33	25	9	8	10	9
Tests per 100 000 population²	2506	2317	2311	2265	2290	2160	2447	2220

¹Total includes cases where sex is not reported

²Denominator = Statistics New Zealand mid-year population estimates

Laboratory surveillance of chlamydia and gonorrhoea: April - June 2015

Quarterly chlamydia and gonorrhoea rates (female, male and total population), Jul 2013 to Jun 2015



Denominator = Statistics New Zealand mid-year population estimates

Note: Data processing methods allow for exclusion of repeat tests. NAAT testing introduced in Q1 2014.

Number of lab confirmed chlamydia cases (female, male and total population) and number of tests per 100 000 population, July 2013 to June 2015

	Q3 2013	Q4 2013	Q1 2014	Q2 2014	Q3 2014	Q4 2014	Q1 2015	Q2 2015
Number of lab-confirmed cases¹	94	89	122	95	127	93	106	103
<i>Female</i>	67	63	96	71	87	70	79	75
<i>Male</i>	27	26	26	24	39	23	27	28
Tests per 100 000 population²	1672	1576	1906	1808	1873	1722	1698	1709

¹Total includes cases where sex is not reported

²Denominator = Statistics New Zealand mid-year population estimates

Number of lab confirmed gonorrhoea cases (female, male and total population) and number of tests per 100 000 population, July 2013 to June 2015

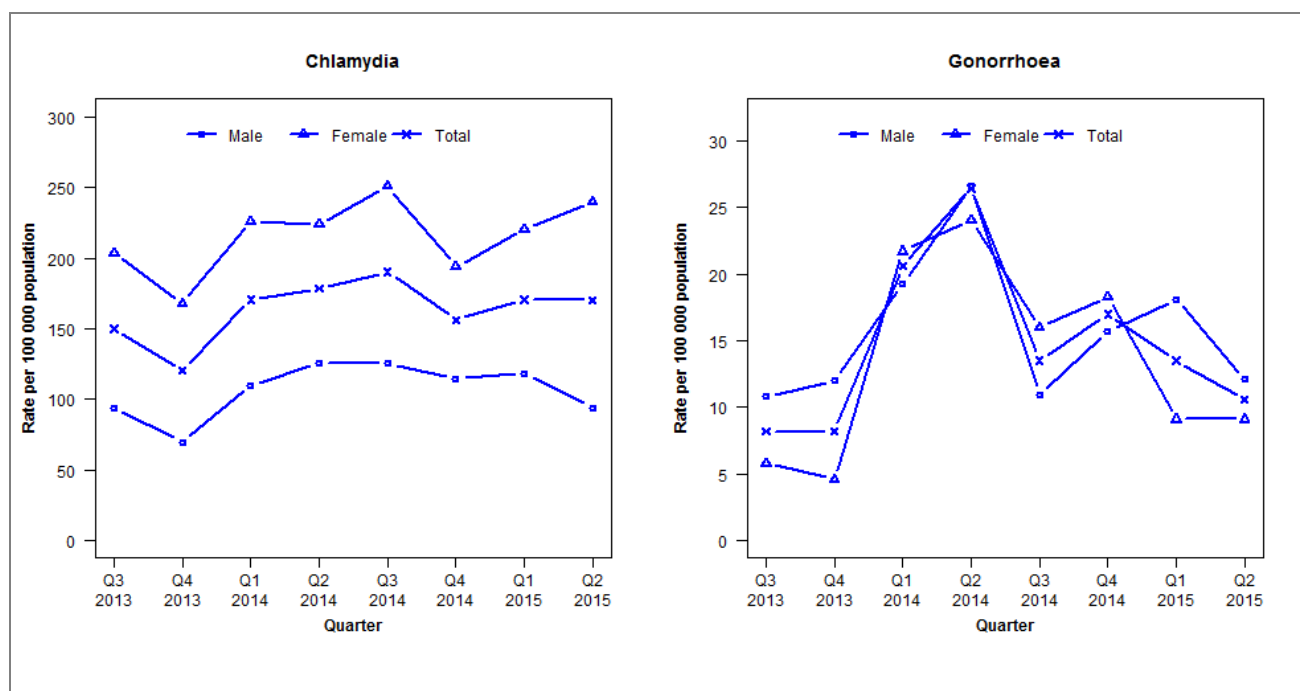
	Q3 2013	Q4 2013	Q1 2014	Q2 2014	Q3 2014	Q4 2014	Q1 2015	Q2 2015
Number of lab-confirmed cases¹	2	8	9	8	14	5	8	6
<i>Female</i>	0	4	6	3	8	3	4	3
<i>Male</i>	2	4	3	5	6	2	4	3
Tests per 100 000 population²	1063	975	1627	1804	1881	1768	1744	1754

¹Total includes cases where sex is not reported

²Denominator = Statistics New Zealand mid-year population estimates

Laboratory surveillance of chlamydia and gonorrhoea: April - June 2015

Quarterly chlamydia and gonorrhoea rates (female, male and total population), Jul 2013 to Jun 2015



Denominator = Statistics New Zealand mid-year population estimates

Note: Data processing procedures allow for exclusion of repeat tests. NAAT testing introduced in Q1 2014.

Number of lab confirmed chlamydia cases (female, male and total population) and number of tests per 100 000 population, July 2013 to June 2015

	Q3 2013	Q4 2013	Q1 2014	Q2 2014	Q3 2014	Q4 2014	Q1 2015	Q2 2015
Number of lab-confirmed cases¹	255	205	291	304	324	266	291	290
<i>Female</i>	177	146	198	196	220	170	193	210
<i>Male</i>	78	58	91	104	104	95	98	78
Tests per 100 000 population²	1737	1564	1686	1772	1903	1744	1912	1842

¹Total includes cases where sex is not reported

²Denominator = Statistics New Zealand mid-year population estimates

Number of lab confirmed gonorrhoea cases (female, male and total population) and number of tests per 100 000 population, July 2013 to June 2015

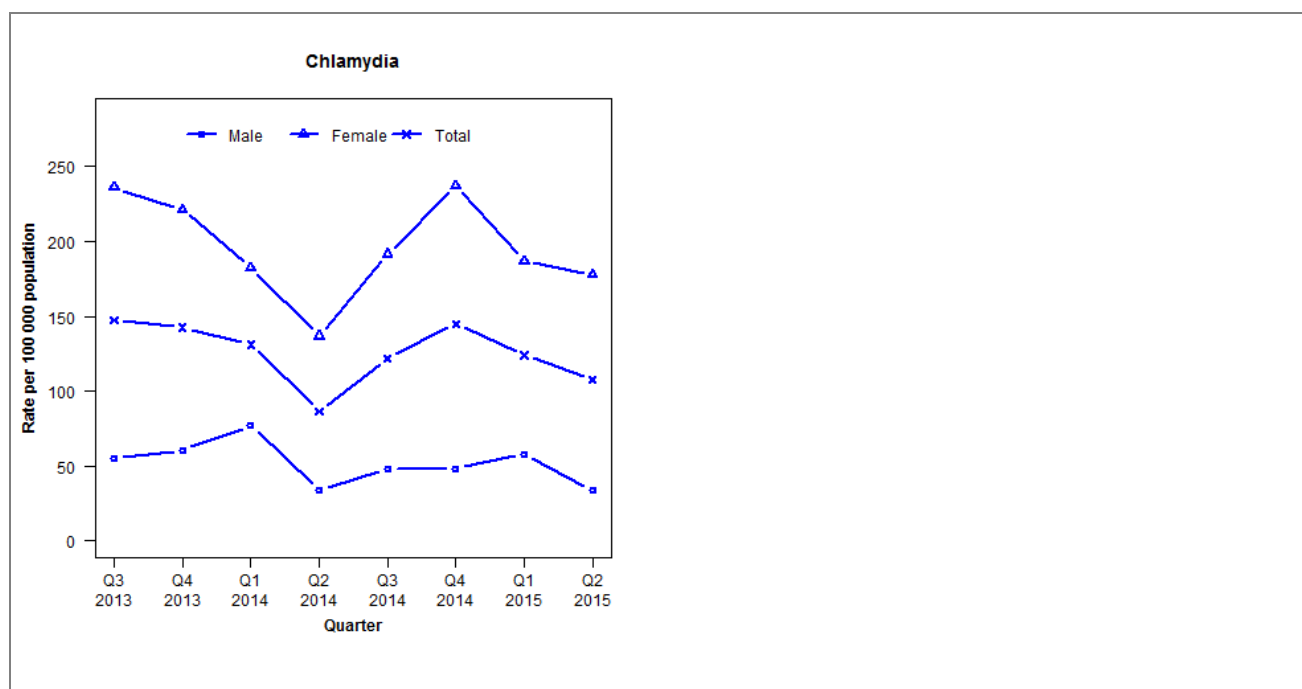
	Q3 2013	Q4 2013	Q1 2014	Q2 2014	Q3 2014	Q4 2014	Q1 2015	Q2 2015
Number of lab-confirmed cases¹	14	14	35	45	23	29	23	18
<i>Female</i>	5	4	19	21	14	16	8	8
<i>Male</i>	9	10	16	22	9	13	15	10
Tests per 100 000 population²	1454	1276	1591	1809	1943	1794	1962	1896

¹Total includes cases where sex is not reported

²Denominator = Statistics New Zealand mid-year population estimates

Laboratory surveillance of chlamydia and gonorrhoea: April - June 2015

Quarterly chlamydia and gonorrhoea rates (female, male and total population), Jul 2013 to Jun 2015



Denominator = Statistics New Zealand mid-year population estimates

Note: Data processing methods allow for exclusion of repeat tests. Gonorrhoea rates are not presented as there are fewer than five cases in many quarters.

Number of lab confirmed chlamydia cases (female, male and total population) and number of tests per 100 000 population, July 2013 to June 2015

	Q3 2013	Q4 2013	Q1 2014	Q2 2014	Q3 2014	Q4 2014	Q1 2015	Q2 2015
Number of lab-confirmed cases¹	60	58	56	37	52	62	53	46
<i>Female</i>	49	46	40	30	42	52	41	39
<i>Male</i>	11	12	16	7	10	10	12	7
Tests per 100 000 population²	1523	1481	1422	1319	1476	1378	1404	1256

¹Total includes cases where sex is not reported

²Denominator = Statistics New Zealand mid-year population estimates

Number of lab confirmed gonorrhoea cases (female, male and total population) and number of tests per 100 000 population, July 2013 to June 2015

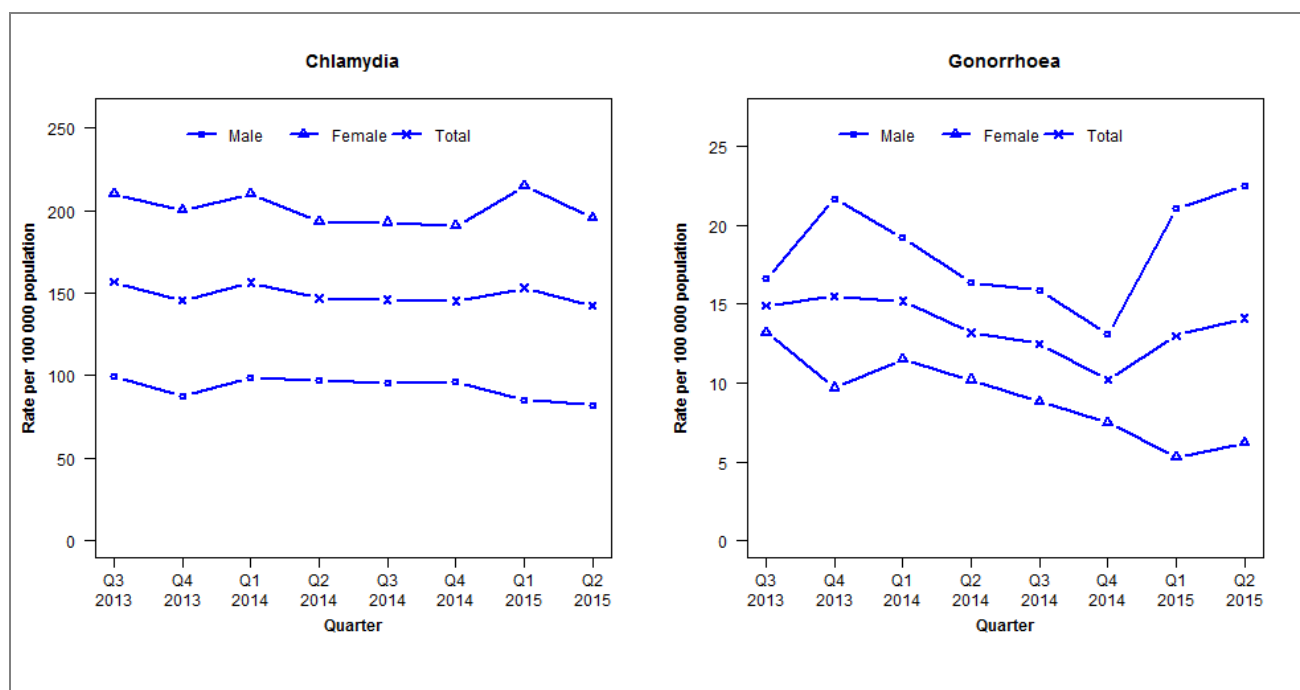
	Q3 2013	Q4 2013	Q1 2014	Q2 2014	Q3 2014	Q4 2014	Q1 2015	Q2 2015
Number of lab-confirmed cases¹	3	3	3	2	4	1	2	1
<i>Female</i>	2	2	1	1	1	1	1	1
<i>Male</i>	1	1	2	1	3	0	1	0
Tests per 100 000 population²	1090	1048	1172	1287	1441	1399	1434	1282

¹Total includes cases where sex is not reported

²Denominator = Statistics New Zealand mid-year population estimates

Laboratory surveillance of chlamydia and gonorrhoea: April - June 2015

Quarterly chlamydia and gonorrhoea rates (female, male and total population), Jul 2013 to Jun 2015



Denominator = Statistics New Zealand mid-year population estimates

Note: Data processing methods allow for exclusion of repeat tests.

Number of lab confirmed chlamydia cases (female, male and total population) and number of tests per 100 000 population, July 2013 to June 2015

	Q3 2013	Q4 2013	Q1 2014	Q2 2014	Q3 2014	Q4 2014	Q1 2015	Q2 2015
Number of lab-confirmed cases¹	695	646	688	646	642	638	673	625
<i>Female</i>	476	454	475	437	436	431	486	443
<i>Male</i>	215	189	211	207	204	205	182	175
Tests per 100 000 population²	2437	2323	2446	2445	2538	2387	2543	2584

¹Total includes cases where sex is not reported²Denominator = Statistics New Zealand mid-year population estimates

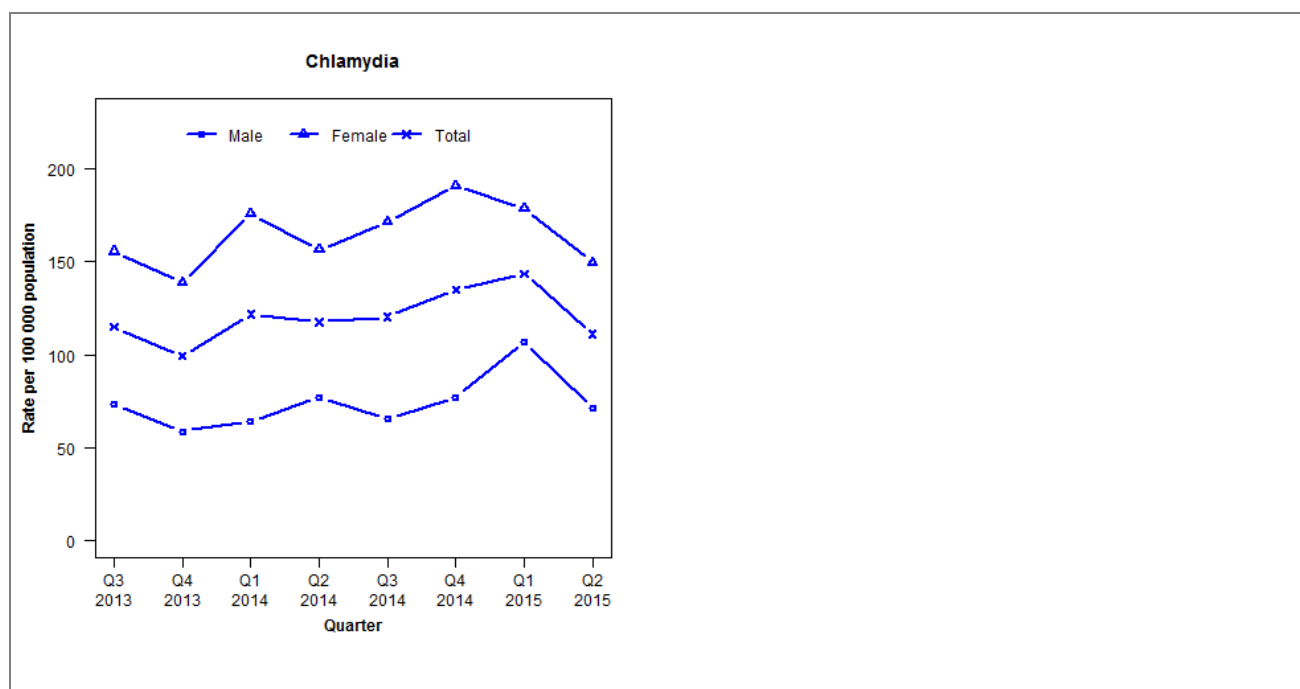
Number of lab confirmed gonorrhoea cases (female, male and total population) and number of tests per 100 000 population, July 2013 to June 2015

	Q3 2013	Q4 2013	Q1 2014	Q2 2014	Q3 2014	Q4 2014	Q1 2015	Q2 2015
Number of lab-confirmed cases¹	66	69	67	58	55	45	57	62
<i>Female</i>	30	22	26	23	20	17	12	14
<i>Male</i>	36	47	41	35	34	28	45	48
Tests per 100 000 population²	2418	2231	2425	2433	2506	2350	2544	2586

¹Total includes cases where sex is not reported²Denominator = Statistics New Zealand mid-year population estimates

Laboratory surveillance of chlamydia and gonorrhoea: April - June 2015

Quarterly chlamydia and gonorrhoea rates (female, male and total population), Jul 2013 to Jun 2015



Denominator = Statistics New Zealand mid-year population estimates

Note: Data processing procedures allow for exclusion of repeat tests. Gonorrhoea rates are not presented as there are fewer than five cases in many quarters.

Number of lab confirmed chlamydia cases (female, male and total population) and number of tests per 100 000 population, July 2013 to June 2015

	Q3 2013	Q4 2013	Q1 2014	Q2 2014	Q3 2014	Q4 2014	Q1 2015	Q2 2015
Number of lab-confirmed cases¹	162	140	174	168	172	193	205	159
<i>Female</i>	111	99	128	114	125	139	130	109
<i>Male</i>	51	41	45	54	46	54	75	50
Tests per 100 000 population²	1679	1519	1684	1603	1601	1662	1714	1617

¹Total includes cases where sex is not reported

²Denominator = Statistics New Zealand mid-year population estimates

Number of lab confirmed gonorrhoea cases (female, male and total population) and number of tests per 100 000 population, July 2013 to June 2015

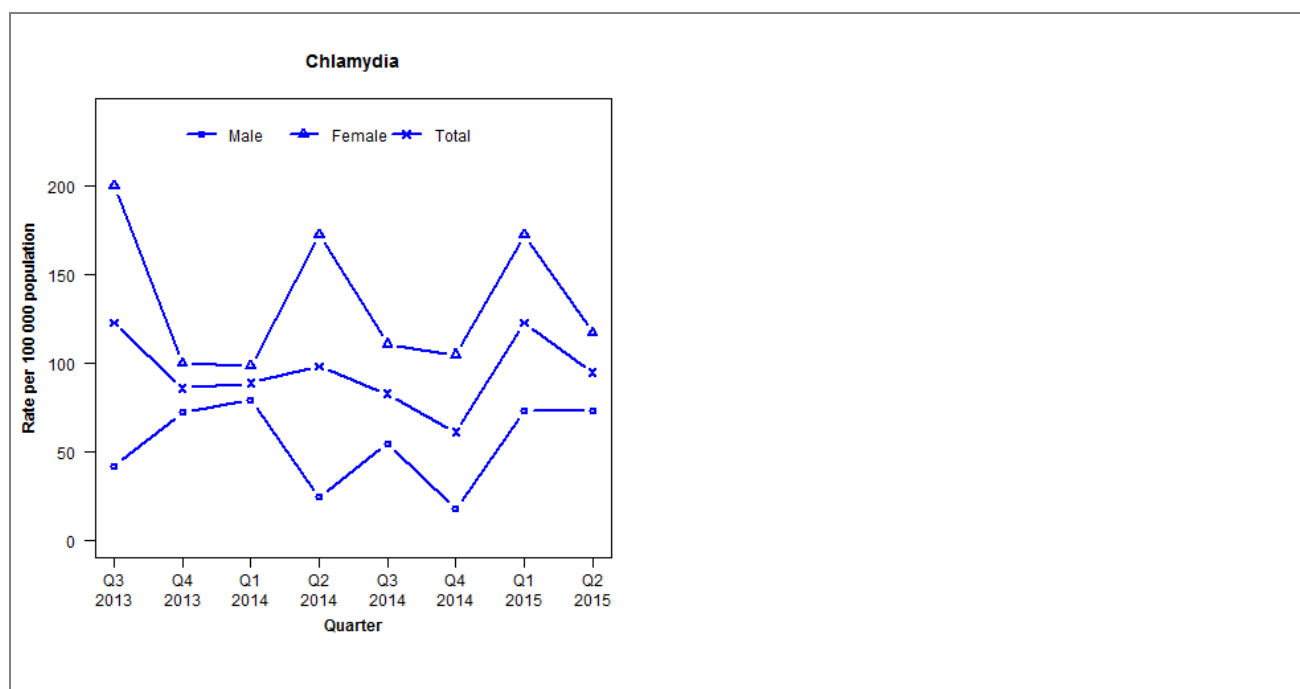
	Q3 2013	Q4 2013	Q1 2014	Q2 2014	Q3 2014	Q4 2014	Q1 2015	Q2 2015
Number of lab-confirmed cases¹	4	5	6	22	13	6	14	10
<i>Female</i>	2	1	1	11	8	4	7	5
<i>Male</i>	2	4	5	11	5	2	7	5
Tests per 100 000 population²	3321	3050	3186	1635	1611	1672	1734	1626

¹Total includes cases where sex is not reported

²Denominator = Statistics New Zealand mid-year population estimates

Laboratory surveillance of chlamydia and gonorrhoea: April - June 2015

Quarterly chlamydia and gonorrhoea rates (female, male and total population), Jul 2013 to Jun 2015



Denominator = Statistics New Zealand mid-year population estimates

Note: Data processing methods allow for exclusion of repeat tests. Gonorrhoea rates are not presented as there are fewer than five cases in many quarters.

Number of lab confirmed chlamydia cases (female, male and total population) and number of tests per 100 000 population, July 2013 to June 2015

	Q3 2013	Q4 2013	Q1 2014	Q2 2014	Q3 2014	Q4 2014	Q1 2015	Q2 2015
Number of lab-confirmed cases¹	40	28	29	32	27	20	40	31
<i>Female</i>	32	16	16	28	18	17	28	19
<i>Male</i>	7	12	13	4	9	3	12	12
Tests per 100 000 population²	1644	1469	1865	1693	1393	1476	1632	1497

¹Total includes cases where sex is not reported

²Denominator = Statistics New Zealand mid-year population estimates

Number of lab confirmed gonorrhoea cases (female, male and total population) and number of tests per 100 000 population, July 2013 to June 2015

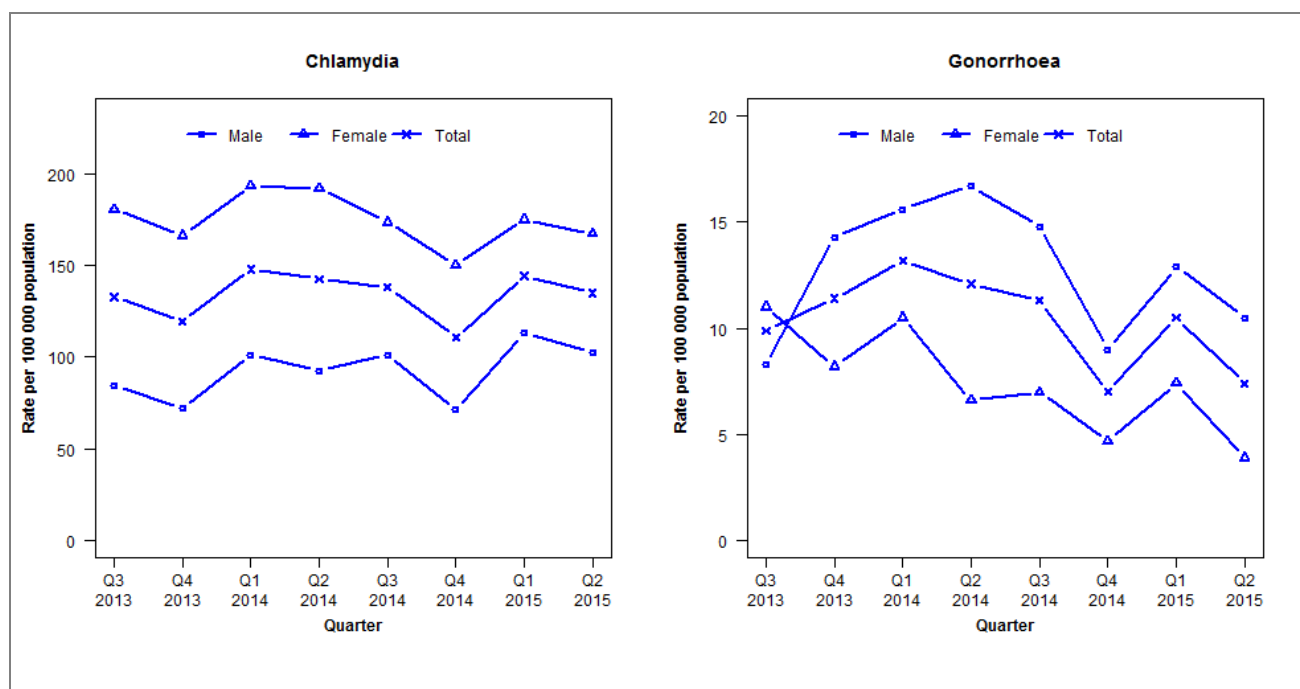
	Q3 2013	Q4 2013	Q1 2014	Q2 2014	Q3 2014	Q4 2014	Q1 2015	Q2 2015
Number of lab-confirmed cases¹	1	1	0	1	1	0	1	2
<i>Female</i>	1	0	0	0	0	0	0	1
<i>Male</i>	0	1	0	1	1	0	1	1
Tests per 100 000 population²	1644	1469	1865	1696	1393	1476	1632	1497

¹Total includes cases where sex is not reported

²Denominator = Statistics New Zealand mid-year population estimates

Laboratory surveillance of chlamydia and gonorrhoea: April - June 2015

Quarterly chlamydia and gonorrhoea rates (female, male and total population), Jul 2013 to Jun 2015



Denominator = Statistics New Zealand mid-year population estimates

Note: Data processing methods allow for exclusion of repeat tests.

Number of lab confirmed chlamydia cases (female, male and total population) and number of tests per 100 000 population, July 2013 to June 2015

	Q3 2013	Q4 2013	Q1 2014	Q2 2014	Q3 2014	Q4 2014	Q1 2015	Q2 2015
Number of lab-confirmed cases¹	674	606	760	732	709	569	741	693
Female	460	424	497	493	446	386	450	430
Male	213	182	260	238	260	183	290	263
Tests per 100 000 population²	2107	1976	2124	2112	2205	2014	2219	2191

¹Total includes cases where sex is not reported

²Denominator = Statistics New Zealand mid-year population estimates

Number of lab confirmed gonorrhoea cases (female, male and total population) and number of tests per 100 000 population, July 2013 to June 2015

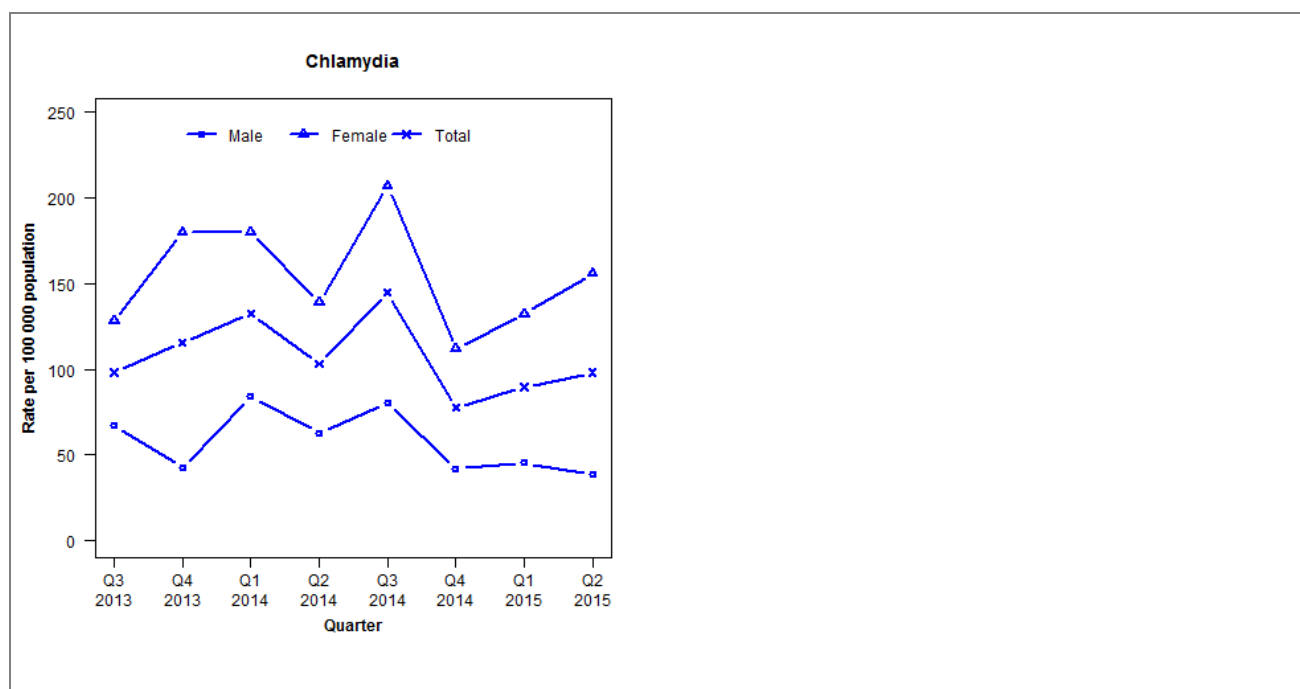
	Q3 2013	Q4 2013	Q1 2014	Q2 2014	Q3 2014	Q4 2014	Q1 2015	Q2 2015
Number of lab-confirmed cases¹	50	58	68	62	58	36	54	38
Female	28	21	27	17	18	12	19	10
Male	21	36	40	43	38	23	33	27
Tests per 100 000 population²	2993	2686	2853	2799	2929	2685	2899	2829

¹Total includes cases where sex is not reported

²Denominator = Statistics New Zealand mid-year population estimates

Laboratory surveillance of chlamydia and gonorrhoea: April - June 2015

Quarterly chlamydia and gonorrhoea rates (female, male and total population), Jul 2013 to Jun 2015



Denominator = Statistics New Zealand mid-year population estimates

Note: Data processing methods introduced allow for exclusion of repeat tests. Gonorrhoea rates are not presented as there are fewer than five cases in many quarters.

Number of lab confirmed chlamydia cases (female, male and total population) and number of tests per 100 000 population, July 2013 to June 2015

	Q3 2013	Q4 2013	Q1 2014	Q2 2014	Q3 2014	Q4 2014	Q1 2015	Q2 2015
Number of lab-confirmed cases¹	56	66	77	60	84	45	52	57
<i>Female</i>	37	52	53	41	61	33	39	46
<i>Male</i>	19	12	24	18	23	12	13	11
Tests per 100 000 population²	1350	1487	1455	1346	1524	1319	1513	1479

¹Total includes cases where sex is not reported

²Denominator = Statistics New Zealand mid-year population estimates

Number of lab confirmed gonorrhoea cases (female, male and total population) and number of tests per 100 000 population, July 2013 to June 2015

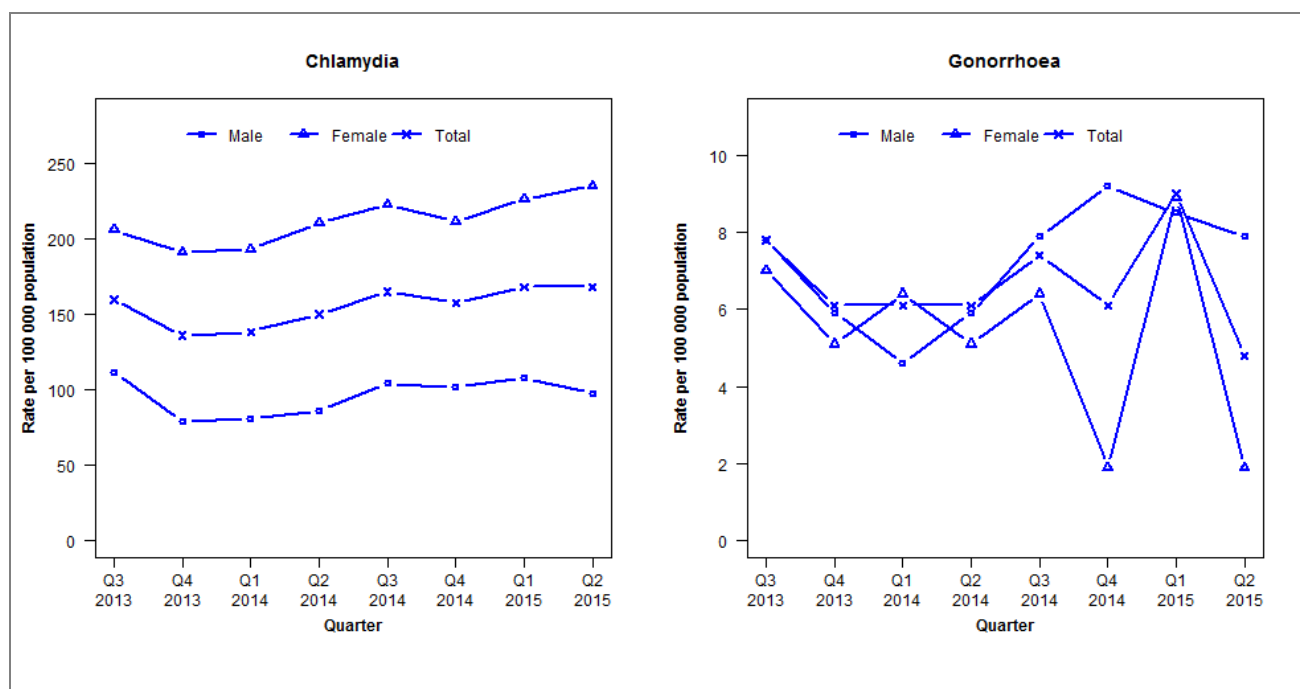
	Q3 2013	Q4 2013	Q1 2014	Q2 2014	Q3 2014	Q4 2014	Q1 2015	Q2 2015
Number of lab-confirmed cases¹	2	2	6	5	2	2	0	2
<i>Female</i>	1	1	2	0	0	0	0	1
<i>Male</i>	1	0	4	4	2	1	0	1
Tests per 100 000 population²	1736	1940	1782	1661	1806	1687	1920	1887

¹Total includes cases where sex is not reported

²Denominator = Statistics New Zealand mid-year population estimates

Laboratory surveillance of chlamydia and gonorrhoea: April - June 2015

Quarterly chlamydia and gonorrhoea rates (female, male and total population), Jul 2013 to Jun 2015



Denominator = Statistics New Zealand mid-year population estimates

Note: Data processing methods allow for exclusion of repeat tests.

Number of lab confirmed chlamydia cases (female, male and total population) and number of tests per 100 000 population, July 2013 to June 2015

	Q3 2013	Q4 2013	Q1 2014	Q2 2014	Q3 2014	Q4 2014	Q1 2015	Q2 2015
Number of lab-confirmed cases¹	495	421	429	465	511	488	521	521
<i>Female</i>	322	299	304	331	351	333	356	370
<i>Male</i>	171	121	123	131	159	155	164	149
Tests per 100 000 population²	2470	2172	2272	2357	2467	2311	2413	2485

¹Total includes cases where sex is not reported

²Denominator = Statistics New Zealand mid-year population estimates

Number of lab confirmed gonorrhoea cases (female, male and total population) and number of tests per 100 000 population, July 2013 to June 2015

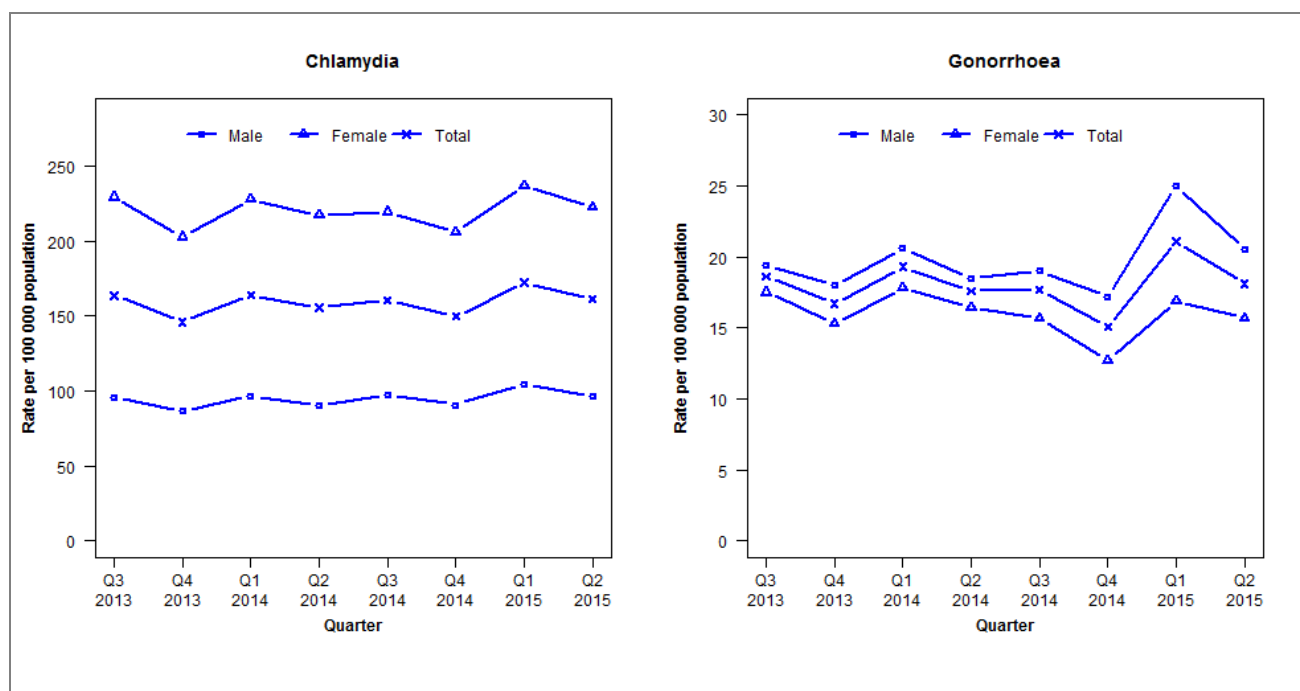
	Q3 2013	Q4 2013	Q1 2014	Q2 2014	Q3 2014	Q4 2014	Q1 2015	Q2 2015
Number of lab-confirmed cases¹	24	19	19	19	23	19	28	15
<i>Female</i>	11	8	10	8	10	3	14	3
<i>Male</i>	12	9	7	9	12	14	13	12
Tests per 100 000 population²	2552	2235	2330	2414	2520	2360	2479	2542

¹Total includes cases where sex is not reported

²Denominator = Statistics New Zealand mid-year population estimates

Laboratory surveillance of chlamydia and gonorrhoea: April - June 2015

Quarterly chlamydia and gonorrhoea rates (female, male and total population), Jul 2013 to Jun 2015



Denominator = Statistics New Zealand mid-year population estimates

Note: Data processing methods allow for exclusion of repeat tests. NAAT (nucleic acid amplification testing) for gonorrhoea has been introduced in the majority of laboratories since 2012. Refer to DHB level reports for further details. Northland data incomplete from Q2 2013, but complete from Q1 2015 onwards. Data not received from Waitemata DHB for all quarters in 2013. Additional 2014 data received has been included and may have impacted slightly on the counts and rates produced.

Number of lab confirmed chlamydia cases (female, male and total population) and number of tests per 100 000 population, July 2013 to June 2015

	Q3 2013	Q4 2013	Q1 2014	Q2 2014	Q3 2014	Q4 2014	Q1 2015	Q2 2015
Number of lab-confirmed cases¹	7309	6515	7379	7005	7217	6740	7759	7258
<i>Female</i>	5199	4600	5231	4989	5041	4733	5439	5120
<i>Male</i>	2098	1903	2129	1999	2148	2001	2305	2120
Tests per 100 000 population²	2267	2106	2228	2231	2312	2202	2379	2340

¹Total includes cases where sex is not reported

²Denominator = Statistics New Zealand mid-year population estimates

Number of lab confirmed gonorrhoea cases (female, male and total population) and number of tests per 100 000 population, July 2013 to June 2015

	Q3 2013	Q4 2013	Q1 2014	Q2 2014	Q3 2014	Q4 2014	Q1 2015	Q2 2015
Number of lab-confirmed cases¹	830	748	870	794	800	679	951	817
<i>Female</i>	397	347	408	378	362	291	389	360
<i>Male</i>	427	396	455	409	420	380	553	452
Tests per 100 000 population²	2617	2394	2539	2471	2560	2441	2658	2597

¹Total includes cases where sex is not reported

²Denominator = Statistics New Zealand mid-year population estimates