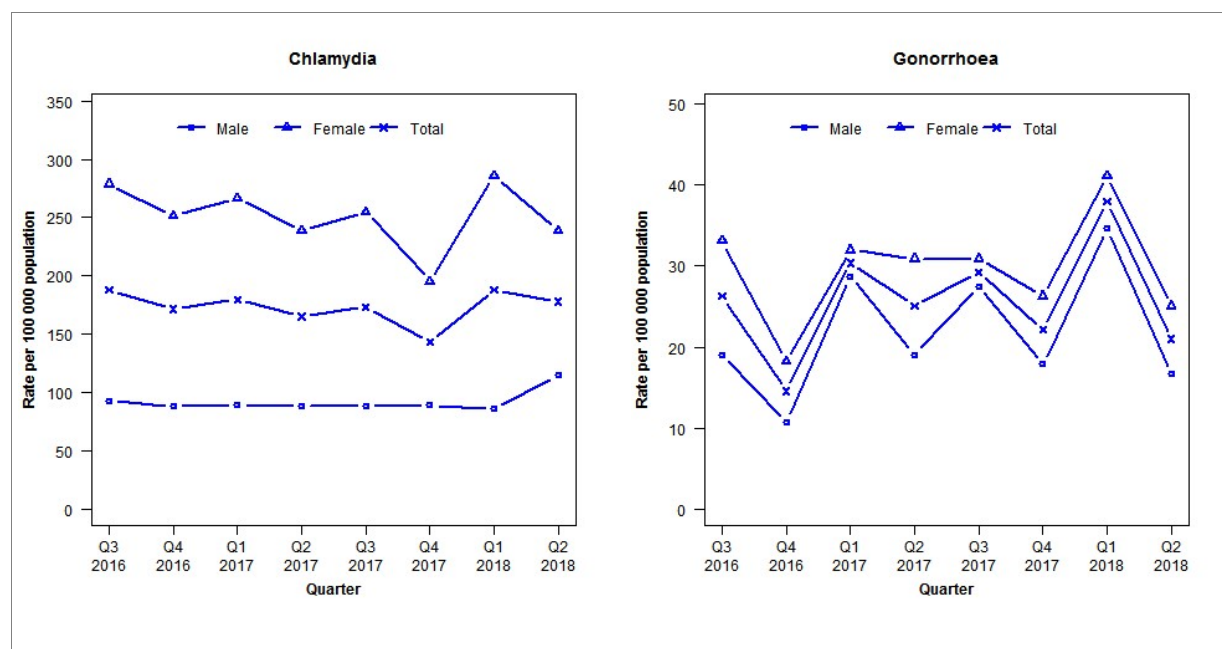


## Laboratory surveillance of chlamydia and gonorrhoea: April - June 2018

Quarterly chlamydia and gonorrhoea rates (male, female and total<sup>1</sup> population), July 2016 to June 2018



<sup>1</sup>Total includes cases where sex is not reported

Denominator = Statistics New Zealand mid-year population estimates

Note: Data processing methods allow for exclusion of repeat tests.

### Number of lab confirmed chlamydia cases (male, female and total population) and number of tests per 100 000 population, July 2016 to June 2018

	Q3 2016	Q4 2016	Q1 2017	Q2 2017	Q3 2017	Q4 2017	Q1 2018	Q2 2018
<b>Number of lab-confirmed cases<sup>1</sup></b>	322	294	308	283	297	246	322	305
<i>Female</i>	244	220	233	209	223	171	250	209
<i>Male</i>	78	74	75	74	74	75	72	96
<b>Tests per 100 000 population<sup>2</sup></b>	1780	1686	1840	1861	1854	1755	1933	1777

<sup>1</sup>Total includes cases where sex is not reported

<sup>2</sup>Denominator = Statistics New Zealand mid-year population estimates

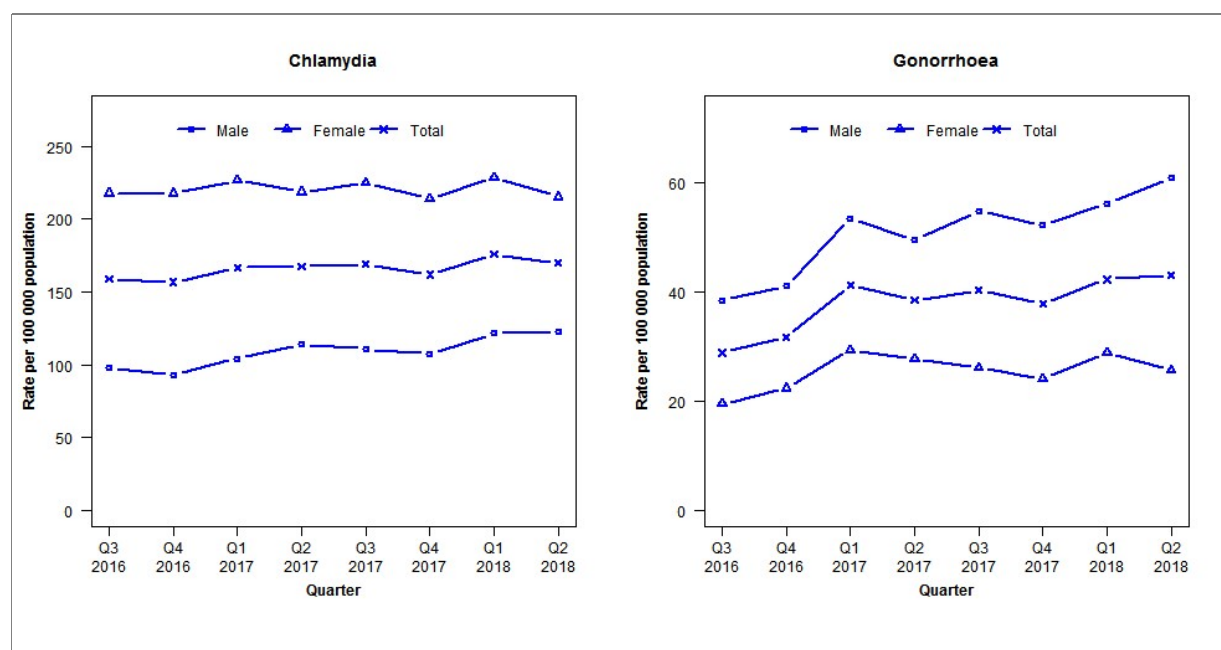
### Number of lab confirmed gonorrhoea cases (female, male and total population) and number of tests per 100 000 population, July 2016 to June 2018

	Q3 2016	Q4 2016	Q1 2017	Q2 2017	Q3 2017	Q4 2017	Q1 2018	Q2 2018
<b>Number of lab-confirmed cases<sup>1</sup></b>	45	25	52	43	50	38	65	36
<i>Female</i>	29	16	28	27	27	23	36	22
<i>Male</i>	16	9	24	16	23	15	29	14
<b>Tests per 100 000 population<sup>2</sup></b>	2313	2176	2322	2306	2277	2173	2400	2186

<sup>1</sup>Total includes cases where sex is not reported

<sup>2</sup>Denominator = Statistics New Zealand mid-year population estimates

## Laboratory surveillance of chlamydia and gonorrhoea: April - June 2018

Quarterly chlamydia and gonorrhoea rates (male, female and total<sup>1</sup> population), July 2016 to June 2018<sup>1</sup>Total includes cases where sex is not reported

Denominator = Statistics New Zealand mid-year population estimates

Note: Data processing methods allow for exclusion of repeat tests.

## Number of lab confirmed chlamydia cases (male, female and total population) and number of tests per 100 000 population, July 2016 to June 2018

	Q3 2016	Q4 2016	Q1 2017	Q2 2017	Q3 2017	Q4 2017	Q1 2018	Q2 2018
<b>Number of lab-confirmed cases<sup>1</sup></b>	2591	2558	2720	2729	2759	2641	2872	2773
<i>Female</i>	1804	1804	1878	1812	1862	1775	1893	1784
<i>Male</i>	784	750	839	917	890	864	976	987
<b>Tests per 100 000 population<sup>2</sup></b>	2447	2249	2460	2417	2502	2428	2675	2671

<sup>1</sup>Total includes cases where sex is not reported<sup>2</sup>Denominator = Statistics New Zealand mid-year population estimates

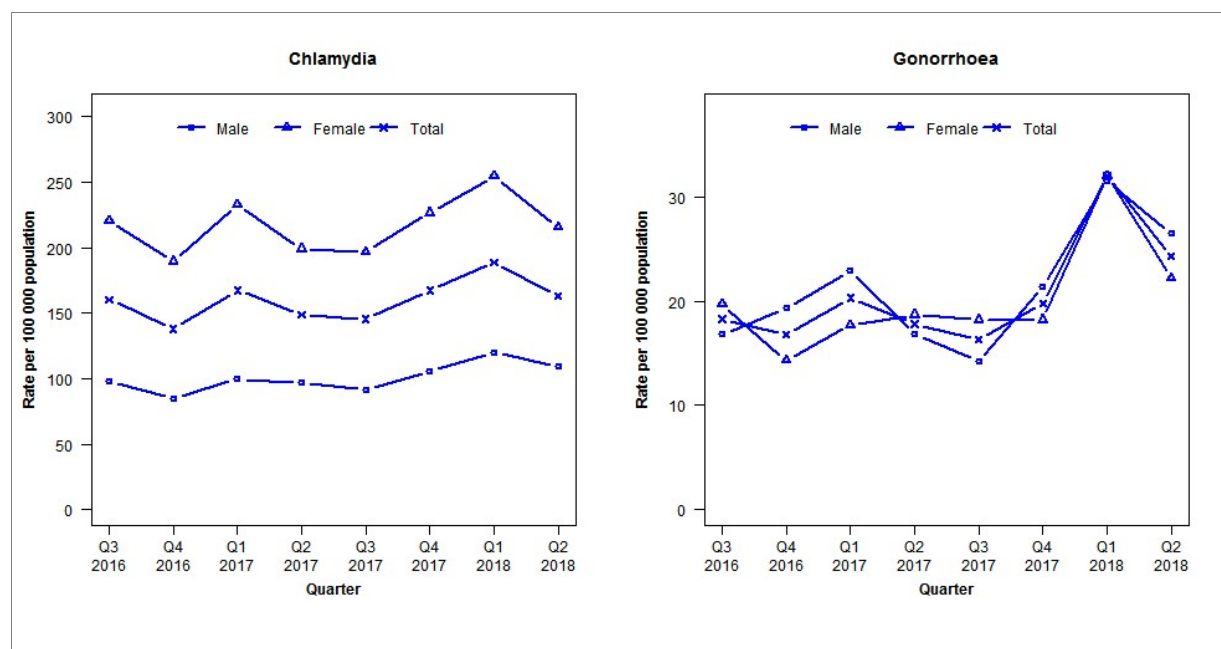
## Number of lab confirmed gonorrhoea cases (female, male and total population) and number of tests per 100 000 population, July 2016 to June 2018

	Q3 2016	Q4 2016	Q1 2017	Q2 2017	Q3 2017	Q4 2017	Q1 2018	Q2 2018
<b>Number of lab-confirmed cases<sup>1</sup></b>	471	517	673	628	657	619	690	704
<i>Female</i>	162	186	244	230	217	200	239	213
<i>Male</i>	309	330	429	397	440	419	451	489
<b>Tests per 100 000 population<sup>2</sup></b>	2605	2369	2627	2586	2695	2626	2798	2841

<sup>1</sup>Total includes cases where sex is not reported<sup>2</sup>Denominator = Statistics New Zealand mid-year population estimates

## Laboratory surveillance of chlamydia and gonorrhoea: April - June 2018

Quarterly chlamydia and gonorrhoea rates (male, female and total<sup>1</sup> population), July 2016 to June 2018



<sup>1</sup>Total includes cases where sex is not reported

Denominator = Statistics New Zealand mid-year population estimates

Note: Data processing methods allow for exclusion of repeat tests. Waikato Hospital data missing in previous 2017 quarterly reports (Q1–Q3) have been included for all quarters in 2017 in this report.

### Number of lab confirmed chlamydia cases (male, female and total population) and number of tests per 100 000 population, July 2016 to June 2018

	Q3 2016	Q4 2016	Q1 2017	Q2 2017	Q3 2017	Q4 2017	Q1 2018	Q2 2018
<b>Number of lab-confirmed cases<sup>1</sup></b>	640	551	669	594	581	669	754	652
<i>Female</i>	448	385	473	404	399	460	517	438
<i>Male</i>	192	166	196	190	180	208	236	214
<b>Tests per 100 000 population<sup>2</sup></b>	2158	1993	2160	2071	2155	2007	2174	2184

<sup>1</sup>Total includes cases where sex is not reported

<sup>2</sup>Denominator = Statistics New Zealand mid-year population estimates

### Number of lab confirmed gonorrhoea cases (female, male and total population) and number of tests per 100 000 population, July 2016 to June 2018

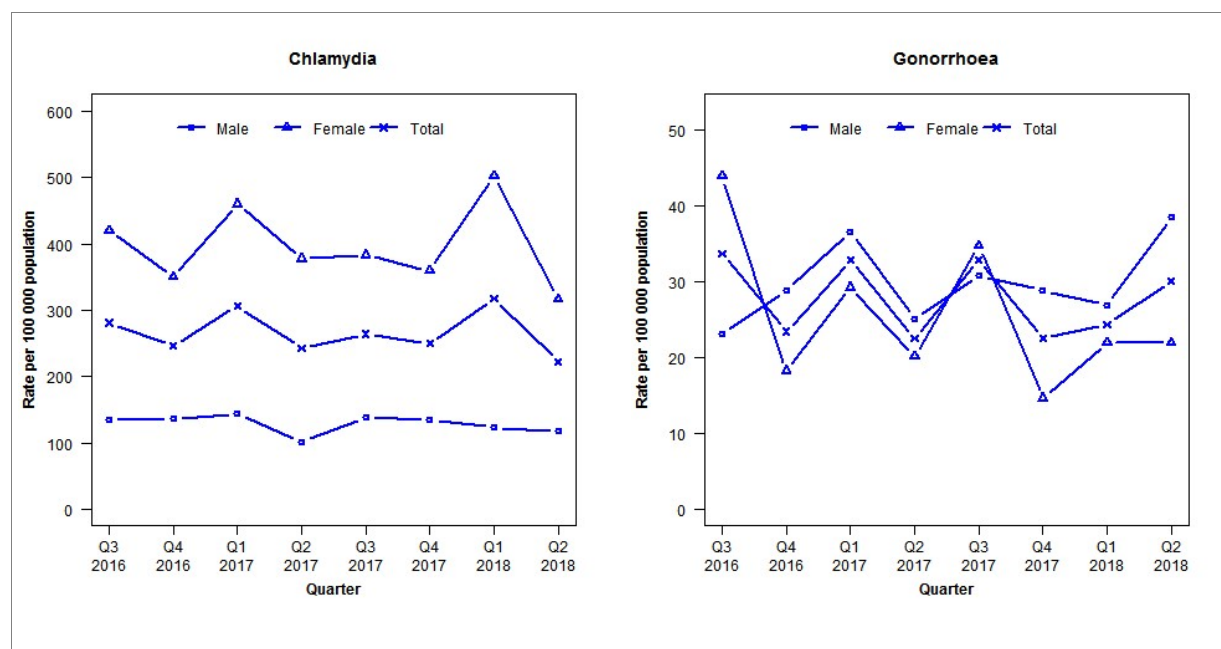
	Q3 2016	Q4 2016	Q1 2017	Q2 2017	Q3 2017	Q4 2017	Q1 2018	Q2 2018
<b>Number of lab-confirmed cases<sup>1</sup></b>	73	67	81	71	65	79	128	97
<i>Female</i>	40	29	36	38	37	37	65	45
<i>Male</i>	33	38	45	33	28	42	62	52
<b>Tests per 100 000 population<sup>2</sup></b>	2184	2024	2186	2095	2177	2029	2192	2212

<sup>1</sup>Total includes cases where sex is not reported

<sup>2</sup>Denominator = Statistics New Zealand mid-year population estimates

## Laboratory surveillance of chlamydia and gonorrhoea: April - June 2018

Quarterly chlamydia and gonorrhoea rates (male, female and total<sup>1</sup> population), July 2016 to June 2018



<sup>1</sup>Total includes cases where sex is not reported

Denominator = Statistics New Zealand mid-year population estimates

Note: Data processing methods allow for exclusion of repeat tests.

### Number of lab confirmed chlamydia cases (male, female and total population) and number of tests per 100 000 population, July 2016 to June 2018

	Q3 2016	Q4 2016	Q1 2017	Q2 2017	Q3 2017	Q4 2017	Q1 2018	Q2 2018
<b>Number of lab-confirmed cases<sup>1</sup></b>	299	262	326	259	281	266	338	237
<i>Female</i>	229	191	251	206	209	196	274	173
<i>Male</i>	70	71	75	53	72	70	64	61
<b>Tests per 100 000 population<sup>2</sup></b>	2834	2490	2830	2634	2646	2634	2880	2806

<sup>1</sup>Total includes cases where sex is not reported

<sup>2</sup>Denominator = Statistics New Zealand mid-year population estimates

### Number of lab confirmed gonorrhoea cases (female, male and total population) and number of tests per 100 000 population, July 2016 to June 2018

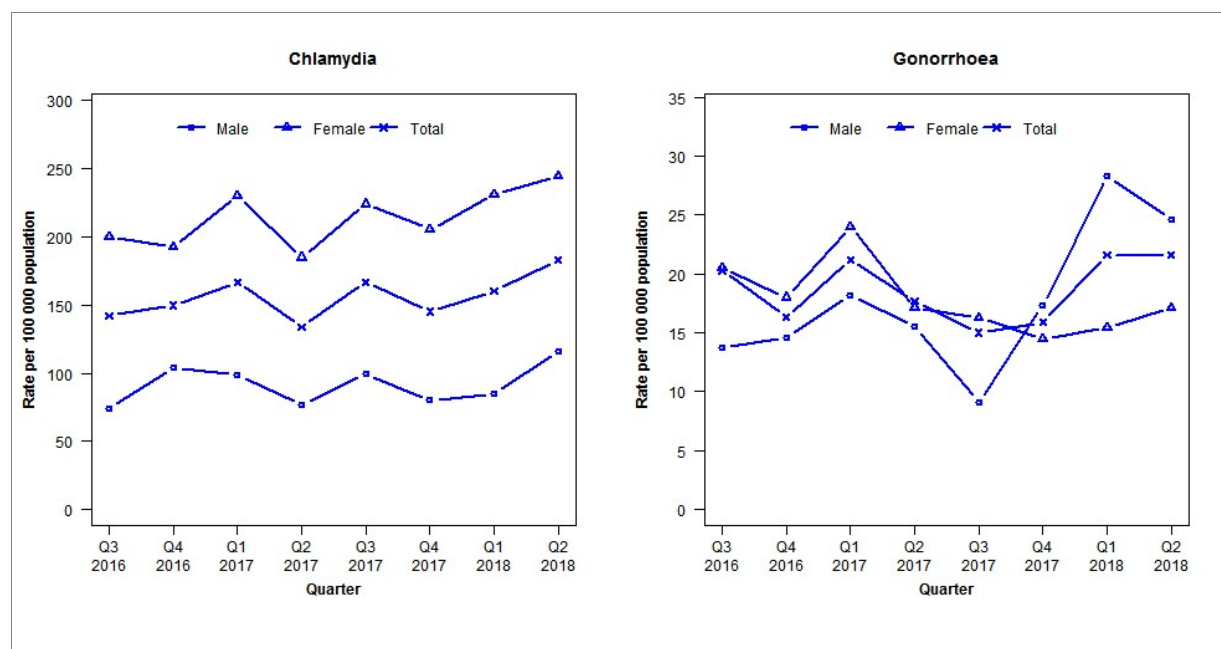
	Q3 2016	Q4 2016	Q1 2017	Q2 2017	Q3 2017	Q4 2017	Q1 2018	Q2 2018
<b>Number of lab-confirmed cases<sup>1</sup></b>	36	25	35	24	35	24	26	32
<i>Female</i>	24	10	16	11	19	8	12	12
<i>Male</i>	12	15	19	13	16	15	14	20
<b>Tests per 100 000 population<sup>2</sup></b>	2841	2494	2836	2642	2648	2634	2881	2807

<sup>1</sup>Total includes cases where sex is not reported

<sup>2</sup>Denominator = Statistics New Zealand mid-year population estimates

## Laboratory surveillance of chlamydia and gonorrhoea: April - June 2018

Quarterly chlamydia and gonorrhoea rates (male, female and total<sup>1</sup> population), July 2016 to June 2018



<sup>1</sup>Total includes cases where sex is not reported

Denominator = Statistics New Zealand mid-year population estimates

Note: Data processing methods allow for exclusion of repeat tests.

### Number of lab confirmed chlamydia cases (male, female and total population) and number of tests per 100 000 population, July 2016 to June 2018

	Q3 2016	Q4 2016	Q1 2017	Q2 2017	Q3 2017	Q4 2017	Q1 2018	Q2 2018
<b>Number of lab-confirmed cases<sup>1</sup></b>	322	339	378	303	378	329	363	415
<i>Female</i>	234	225	269	216	262	240	270	286
<i>Male</i>	81	114	108	84	109	88	93	127
<b>Tests per 100 000 population<sup>2</sup></b>	2101	1966	2191	2033	2132	1927	2201	2203

<sup>1</sup>Total includes cases where sex is not reported

<sup>2</sup>Denominator = Statistics New Zealand mid-year population estimates

### Number of lab confirmed gonorrhoea cases (female, male and total population) and number of tests per 100 000 population, July 2016 to June 2018

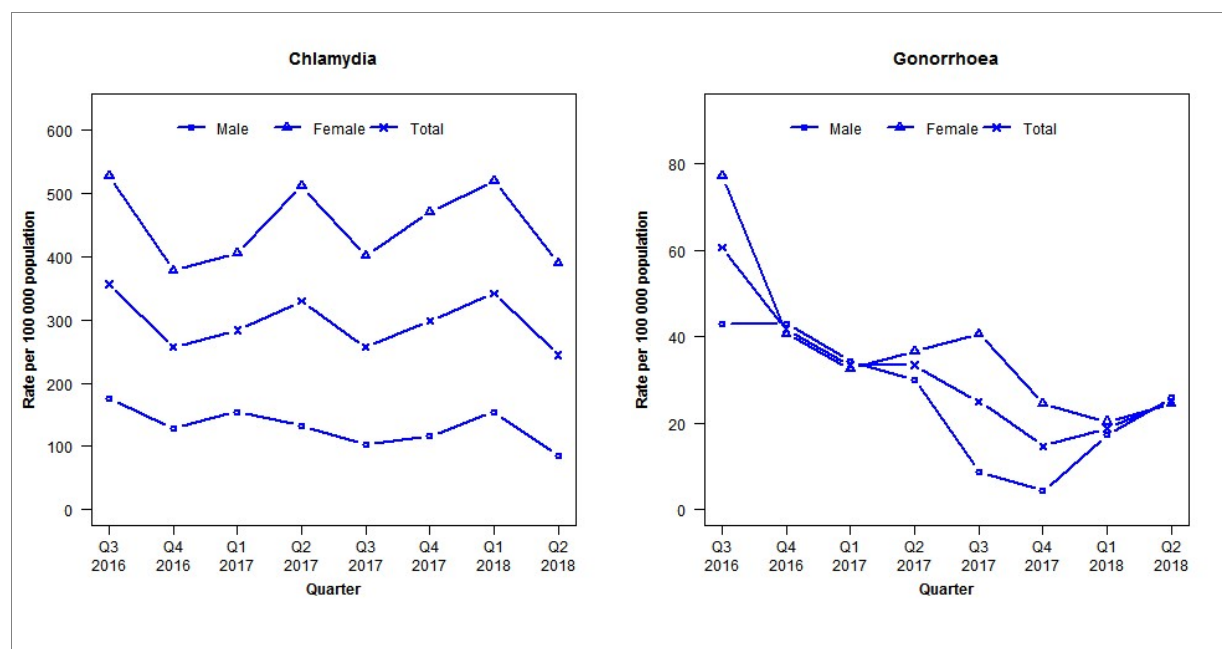
	Q3 2016	Q4 2016	Q1 2017	Q2 2017	Q3 2017	Q4 2017	Q1 2018	Q2 2018
<b>Number of lab-confirmed cases<sup>1</sup></b>	46	37	48	40	34	36	49	49
<i>Female</i>	24	21	28	20	19	17	18	20
<i>Male</i>	15	16	20	17	10	19	31	27
<b>Tests per 100 000 population<sup>2</sup></b>	2101	1969	2193	2035	2136	1931	2207	2206

<sup>1</sup>Total includes cases where sex is not reported

<sup>2</sup>Denominator = Statistics New Zealand mid-year population estimates

## Laboratory surveillance of chlamydia and gonorrhoea: April - June 2018

Quarterly chlamydia and gonorrhoea rates (male, female and total<sup>1</sup> population), July 2016 to June 2018



<sup>1</sup>Total includes cases where sex is not reported

Denominator = Statistics New Zealand mid-year population estimates

Note: Data processing methods allow for exclusion of repeat tests. Gonorrhoea rates for males are based on less than five cases in some quarters.

### Number of lab confirmed chlamydia cases (male, female and total population) and number of tests per 100 000 population, July 2016 to June 2018

	Q3 2016	Q4 2016	Q1 2017	Q2 2017	Q3 2017	Q4 2017	Q1 2018	Q2 2018
<b>Number of lab-confirmed cases<sup>1</sup></b>	171	123	136	158	123	143	164	117
<i>Female</i>	130	93	100	126	99	116	128	96
<i>Male</i>	41	30	36	31	24	27	36	20
<b>Tests per 100 000 population<sup>2</sup></b>	2352	2254	2440	2523	2402	2348	2521	2283

<sup>1</sup>Total includes cases where sex is not reported

<sup>2</sup>Denominator = Statistics New Zealand mid-year population estimates

### Number of lab confirmed gonorrhoea cases (female, male and total population) and number of tests per 100 000 population, July 2016 to June 2018

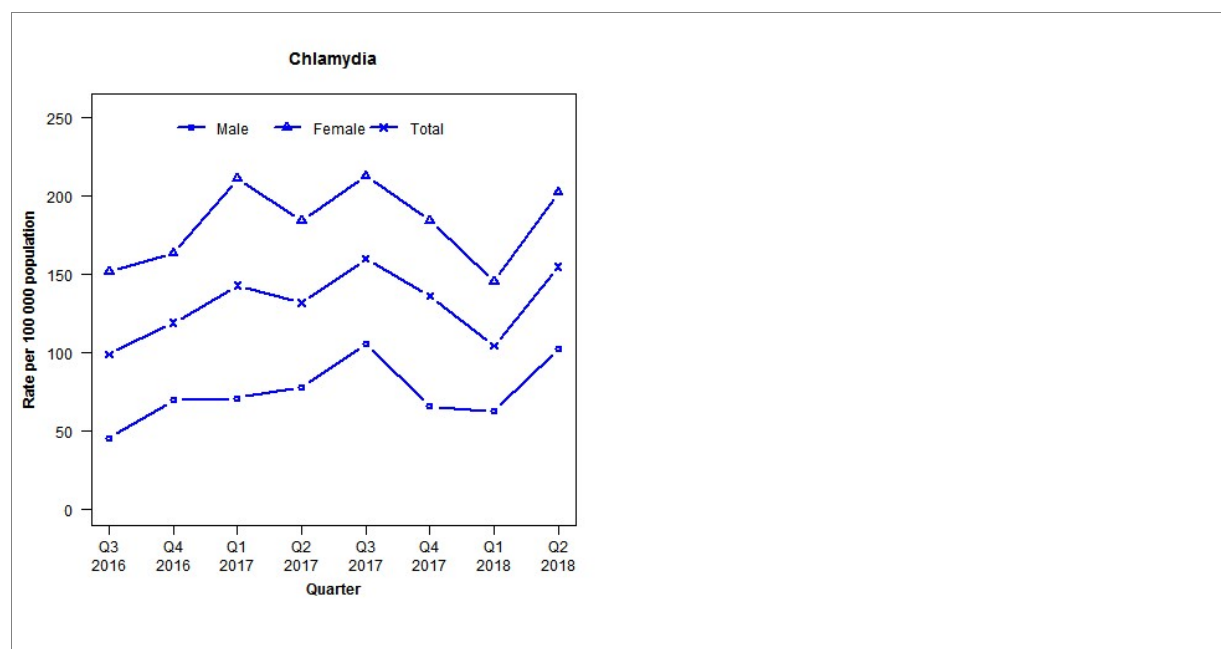
	Q3 2016	Q4 2016	Q1 2017	Q2 2017	Q3 2017	Q4 2017	Q1 2018	Q2 2018
<b>Number of lab-confirmed cases<sup>1</sup></b>	29	20	16	16	12	7	9	12
<i>Female</i>	19	10	8	9	10	6	5	6
<i>Male</i>	10	10	8	7	2	1	4	6
<b>Tests per 100 000 population<sup>2</sup></b>	2365	2294	2473	2542	2427	2388	2540	2385

<sup>1</sup>Total includes cases where sex is not reported

<sup>2</sup>Denominator = Statistics New Zealand mid-year population estimates

## Laboratory surveillance of chlamydia and gonorrhoea: April - June 2018

Quarterly chlamydia and gonorrhoea rates (male, female and total<sup>1</sup> population), July 2016 to June 2018



<sup>1</sup>Total includes cases where sex is not reported

Denominator = Statistics New Zealand mid-year population estimates

Note: Data processing methods allow for exclusion of repeat tests. Gonorrhoea rates are not presented as there are fewer than five cases in many quarters. From 19 January 2017 NAAT testing was introduced for all gonorrhoea specimens in one of the two laboratories.

### Number of lab confirmed chlamydia cases (male, female and total population) and number of tests per 100 000 population, July 2016 to June 2018

	Q3 2016	Q4 2016	Q1 2017	Q2 2017	Q3 2017	Q4 2017	Q1 2018	Q2 2018
<b>Number of lab-confirmed cases<sup>1</sup></b>	115	138	167	154	187	159	122	181
<i>Female</i>	89	96	125	109	126	109	86	120
<i>Male</i>	26	40	41	45	61	38	36	59
<b>Tests per 100 000 population<sup>2</sup></b>	1829	1850	2062	1995	2148	1975	2081	2049

<sup>1</sup>Total includes cases where sex is not reported

<sup>2</sup>Denominator = Statistics New Zealand mid-year population estimates

### Number of lab confirmed gonorrhoea cases (female, male and total population) and number of tests per 100 000 population, July 2016 to June 2018

	Q3 2016	Q4 2016	Q1 2017	Q2 2017	Q3 2017	Q4 2017	Q1 2018	Q2 2018
<b>Number of lab-confirmed cases<sup>1</sup></b>	5	10	9	6	4	0	10	24
<i>Female</i>	1	2	0	2	1	0	5	10
<i>Male</i>	4	8	9	4	3	0	5	14
<b>Tests per 100 000 population<sup>2</sup></b>	2412	2365	2584	2473	2676	2457	2558	2600

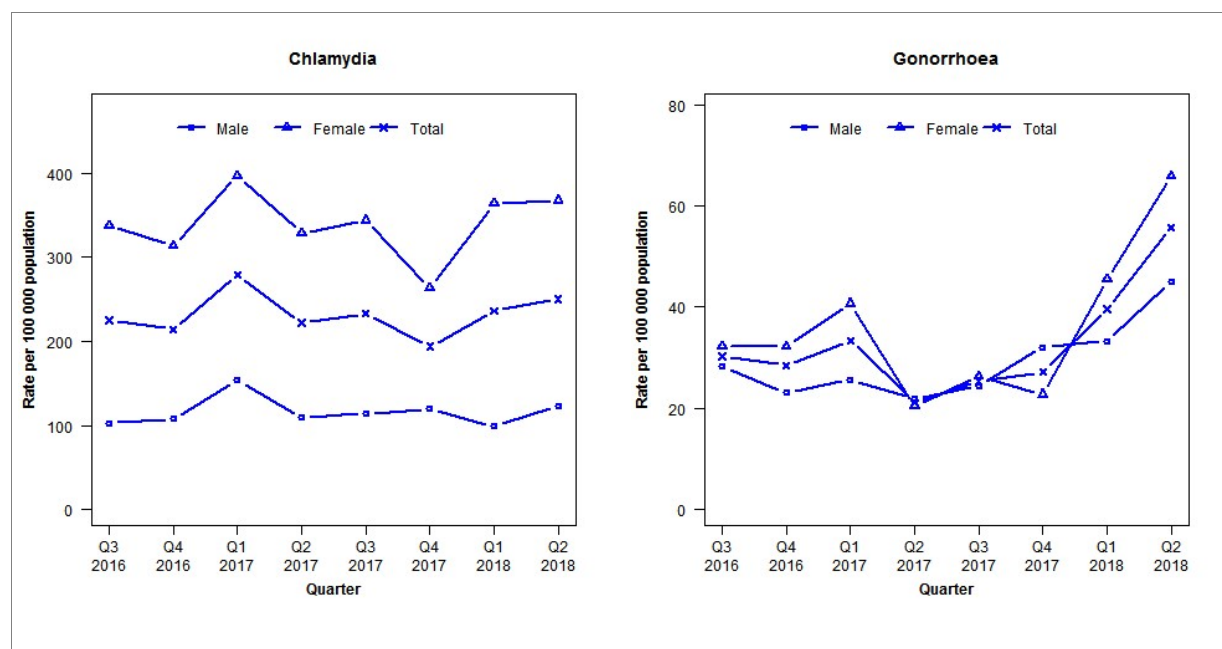
<sup>1</sup>Total includes cases where sex is not reported

<sup>2</sup>Denominator = Statistics New Zealand mid-year population estimates



## Laboratory surveillance of chlamydia and gonorrhoea: April - June 2018

Quarterly chlamydia and gonorrhoea rates (male, female and total<sup>1</sup> population), July 2016 to June 2018



<sup>1</sup>Total includes cases where sex is not reported

Denominator = Statistics New Zealand mid-year population estimates

Note: Data processing methods allow for exclusion of repeat tests.

### Number of lab confirmed chlamydia cases (male, female and total population) and number of tests per 100 000 population, July 2016 to June 2018

	Q3 2016	Q4 2016	Q1 2017	Q2 2017	Q3 2017	Q4 2017	Q1 2018	Q2 2018
<b>Number of lab-confirmed cases<sup>1</sup></b>	363	346	451	359	376	313	381	404
<i>Female</i>	282	262	331	274	287	220	304	307
<i>Male</i>	80	84	120	85	89	93	77	96
<b>Tests per 100 000 population<sup>2</sup></b>	2009	1900	2132	2000	2106	1933	2261	2217

<sup>1</sup>Total includes cases where sex is not reported

<sup>2</sup>Denominator = Statistics New Zealand mid-year population estimates

### Number of lab confirmed gonorrhoea cases (female, male and total population) and number of tests per 100 000 population, July 2016 to June 2018

	Q3 2016	Q4 2016	Q1 2017	Q2 2017	Q3 2017	Q4 2017	Q1 2018	Q2 2018
<b>Number of lab-confirmed cases<sup>1</sup></b>	49	46	54	34	41	44	64	90
<i>Female</i>	27	27	34	17	22	19	38	55
<i>Male</i>	22	18	20	17	19	25	26	35
<b>Tests per 100 000 population<sup>2</sup></b>	2139	2021	2261	2125	2243	2062	2411	2327

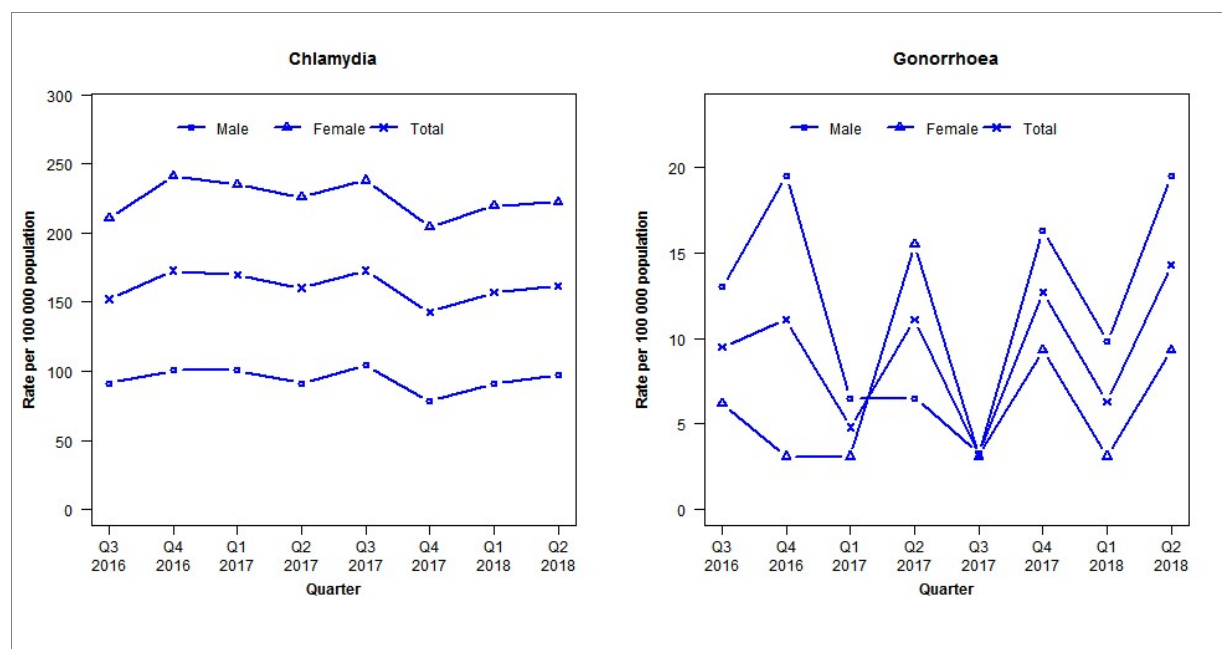
<sup>1</sup>Total includes cases where sex is not reported

<sup>2</sup>Denominator = Statistics New Zealand mid-year population estimates



## Laboratory surveillance of chlamydia and gonorrhoea: April - June 2018

Quarterly chlamydia and gonorrhoea rates (male, female and total<sup>1</sup> population), July 2016 to June 2018



<sup>1</sup>Total includes cases where sex is not reported

Denominator = Statistics New Zealand mid-year population estimates

Note: Data processing methods allow for exclusion of repeat tests. Gonorrhoea rates for males and females are based on less than five cases in many quarters.

### Number of lab confirmed chlamydia cases (male, female and total population) and number of tests per 100 000 population, July 2016 to June 2018

	Q3 2016	Q4 2016	Q1 2017	Q2 2017	Q3 2017	Q4 2017	Q1 2018	Q2 2018
<b>Number of lab-confirmed cases<sup>1</sup></b>	96	109	107	101	109	90	99	102
<i>Female</i>	68	78	76	73	77	66	71	72
<i>Male</i>	28	31	31	28	32	24	28	30
<b>Tests per 100 000 population<sup>2</sup></b>	1853	1748	1834	1743	1848	1711	1786	1659

<sup>1</sup>Total includes cases where sex is not reported

<sup>2</sup>Denominator = Statistics New Zealand mid-year population estimates

### Number of lab confirmed gonorrhoea cases (female, male and total population) and number of tests per 100 000 population, July 2016 to June 2018

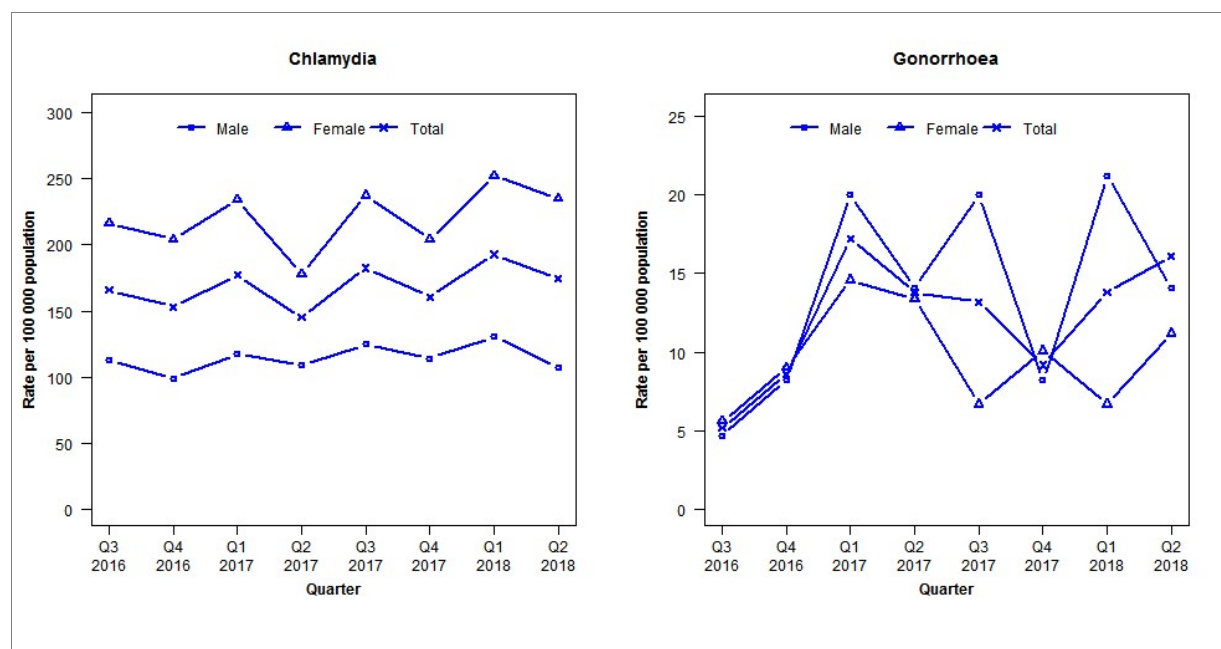
	Q3 2016	Q4 2016	Q1 2017	Q2 2017	Q3 2017	Q4 2017	Q1 2018	Q2 2018
<b>Number of lab-confirmed cases<sup>1</sup></b>	6	7	3	7	2	8	4	9
<i>Female</i>	2	1	1	5	1	3	1	3
<i>Male</i>	4	6	2	2	1	5	3	6
<b>Tests per 100 000 population<sup>2</sup></b>	2300	2156	2243	2217	2306	2106	2026	2183

<sup>1</sup>Total includes cases where sex is not reported

<sup>2</sup>Denominator = Statistics New Zealand mid-year population estimates

## Laboratory surveillance of chlamydia and gonorrhoea: April - June 2018

Quarterly chlamydia and gonorrhoea rates (male, female and total<sup>1</sup> population), July 2016 to June 2018



<sup>1</sup>Total includes cases where sex is not reported

Denominator = Statistics New Zealand mid-year population estimates

Note: Data processing procedures allow for exclusion of repeat tests. Gonorrhoea rates for males are based on less than five cases in one quarter.

### Number of lab confirmed chlamydia cases (male, female and total population) and number of tests per 100 000 population, July 2016 to June 2018

	Q3 2016	Q4 2016	Q1 2017	Q2 2017	Q3 2017	Q4 2017	Q1 2018	Q2 2018
<b>Number of lab-confirmed cases<sup>1</sup></b>	289	267	309	253	318	280	336	304
<i>Female</i>	193	182	209	159	212	182	225	210
<i>Male</i>	96	84	100	93	106	97	111	91
<b>Tests per 100 000 population<sup>2</sup></b>	1837	1841	2017	1927	1971	1878	1979	1968

<sup>1</sup>Total includes cases where sex is not reported

<sup>2</sup>Denominator = Statistics New Zealand mid-year population estimates

### Number of lab confirmed gonorrhoea cases (female, male and total population) and number of tests per 100 000 population, July 2016 to June 2018

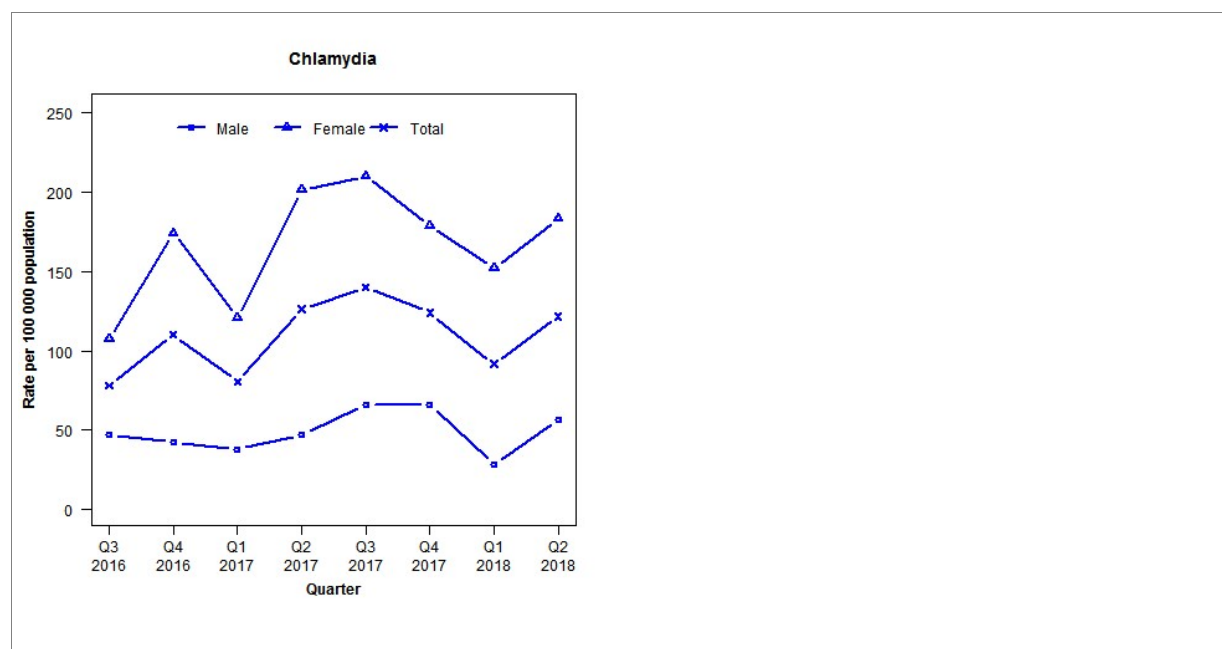
	Q3 2016	Q4 2016	Q1 2017	Q2 2017	Q3 2017	Q4 2017	Q1 2018	Q2 2018
<b>Number of lab-confirmed cases<sup>1</sup></b>	9	15	30	24	23	16	24	28
<i>Female</i>	5	8	13	12	6	9	6	10
<i>Male</i>	4	7	17	12	17	7	18	12
<b>Tests per 100 000 population<sup>2</sup></b>	1865	1871	2047	1954	1997	1911	1995	2103

<sup>1</sup>Total includes cases where sex is not reported

<sup>2</sup>Denominator = Statistics New Zealand mid-year population estimates

## Laboratory surveillance of chlamydia and gonorrhoea: April - June 2018

Quarterly chlamydia and gonorrhoea rates (male, female and total<sup>1</sup> population), July 2016 to June 2018



<sup>1</sup>Total includes cases where sex is not reported

Denominator = Statistics New Zealand mid-year population estimates

Note: Data processing methods allow for exclusion of repeat tests. Gonorrhoea rates are not presented as there are fewer than five cases in all quarters, except for one.

### Number of lab confirmed chlamydia cases (male, female and total population) and number of tests per 100 000 population, July 2016 to June 2018

	Q3 2016	Q4 2016	Q1 2017	Q2 2017	Q3 2017	Q4 2017	Q1 2018	Q2 2018
<b>Number of lab-confirmed cases<sup>1</sup></b>	34	48	35	55	61	54	40	53
<i>Female</i>	24	39	27	45	47	40	34	41
<i>Male</i>	10	9	8	10	14	14	6	12
<b>Tests per 100 000 population<sup>2</sup></b>	1351	1455	1193	1340	1579	1386	1631	1436

<sup>1</sup>Total includes cases where sex is not reported

<sup>2</sup>Denominator = Statistics New Zealand mid-year population estimates

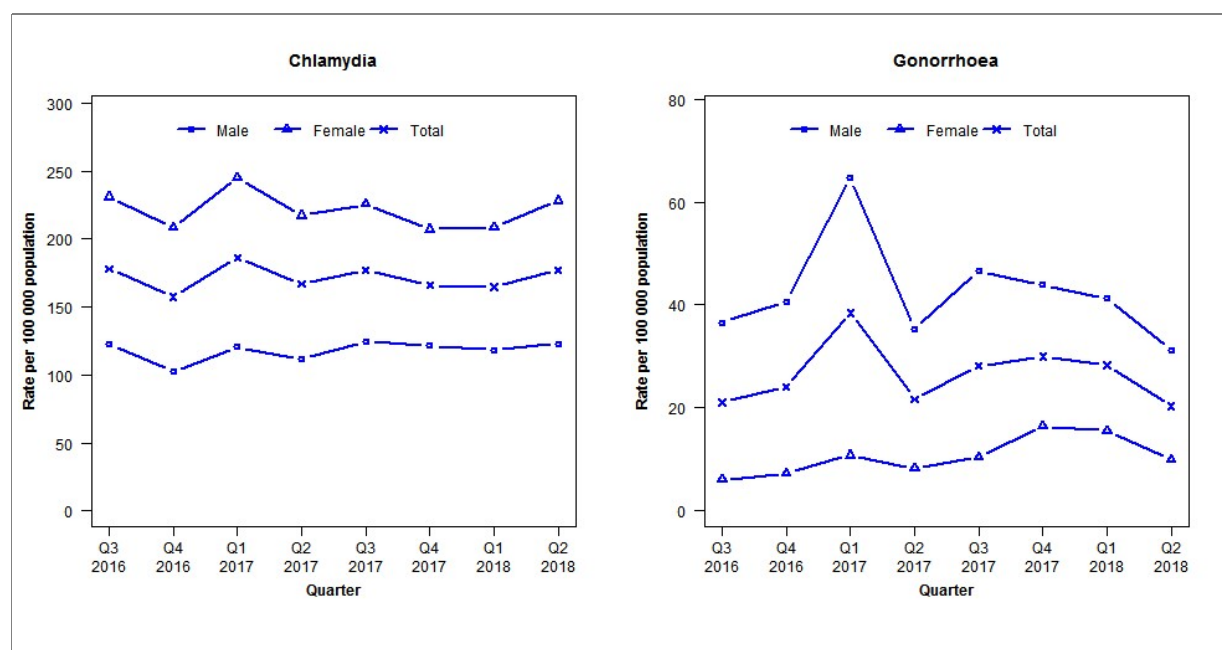
### Number of lab confirmed gonorrhoea cases (female, male and total population) and number of tests per 100 000 population, July 2016 to June 2018

	Q3 2016	Q4 2016	Q1 2017	Q2 2017	Q3 2017	Q4 2017	Q1 2018	Q2 2018
<b>Number of lab-confirmed cases<sup>1</sup></b>	0	2	2	1	4	3	4	5
<i>Female</i>	0	1	1	0	3	2	2	2
<i>Male</i>	0	1	1	1	1	1	1	3
<b>Tests per 100 000 population<sup>2</sup></b>	1436	1549	1227	1395	1629	1416	1654	1443

<sup>1</sup>Total includes cases where sex is not reported

<sup>2</sup>Denominator = Statistics New Zealand mid-year population estimates

## Laboratory surveillance of chlamydia and gonorrhoea: April - June 2018

Quarterly chlamydia and gonorrhoea rates (male, female and total<sup>1</sup> population), July 2016 to June 2018<sup>1</sup>Total includes cases where sex is not reported

Denominator = Statistics New Zealand mid-year population estimates

Note: Data processing methods allow for exclusion of repeat tests.

## Number of lab confirmed chlamydia cases (male, female and total population) and number of tests per 100 000 population, July 2016 to June 2018

	Q3 2016	Q4 2016	Q1 2017	Q2 2017	Q3 2017	Q4 2017	Q1 2018	Q2 2018
<b>Number of lab-confirmed cases<sup>1</sup></b>	807	713	843	755	802	752	746	802
<i>Female</i>	535	483	568	503	523	480	483	529
<i>Male</i>	271	226	267	246	276	269	261	272
<b>Tests per 100 000 population<sup>2</sup></b>	2626	2413	2807	2656	2850	2699	2910	2873

<sup>1</sup>Total includes cases where sex is not reported<sup>2</sup>Denominator = Statistics New Zealand mid-year population estimates

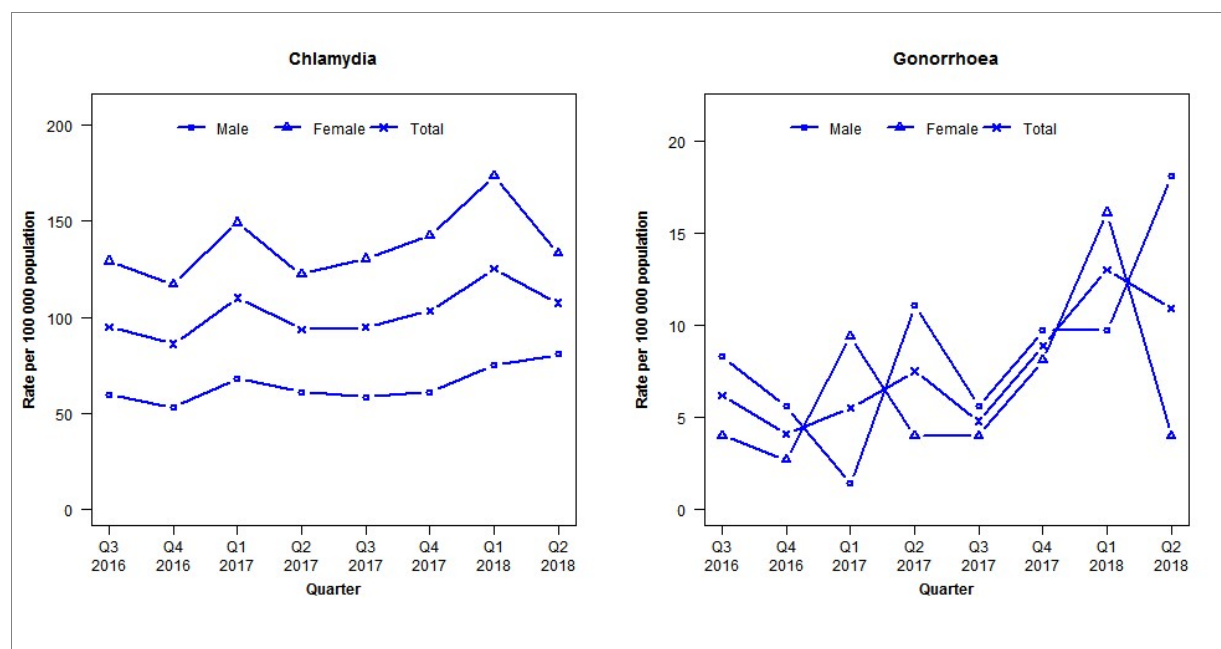
## Number of lab confirmed gonorrhoea cases (female, male and total population) and number of tests per 100 000 population, July 2016 to June 2018

	Q3 2016	Q4 2016	Q1 2017	Q2 2017	Q3 2017	Q4 2017	Q1 2018	Q2 2018
<b>Number of lab-confirmed cases<sup>1</sup></b>	95	109	174	98	127	136	128	92
<i>Female</i>	14	17	25	19	24	38	36	23
<i>Male</i>	81	90	143	78	103	97	91	69
<b>Tests per 100 000 population<sup>2</sup></b>	2627	2417	2828	2672	2872	2718	2929	2893

<sup>1</sup>Total includes cases where sex is not reported<sup>2</sup>Denominator = Statistics New Zealand mid-year population estimates

## Laboratory surveillance of chlamydia and gonorrhoea: April - June 2018

Quarterly chlamydia and gonorrhoea rates (male, female and total<sup>1</sup> population), July 2016 to June 2018



<sup>1</sup>Total includes cases where sex is not reported

Denominator = Statistics New Zealand mid-year population estimates

Note: Data processing procedures allow for exclusion of repeat tests. Gonorrhoea rates for males and females are based on less than five cases in some quarters.

### Number of lab confirmed chlamydia cases (male, female and total population) and number of tests per 100 000 population, July 2016 to June 2018

	Q3 2016	Q4 2016	Q1 2017	Q2 2017	Q3 2017	Q4 2017	Q1 2018	Q2 2018
<b>Number of lab-confirmed cases<sup>1</sup></b>	139	126	161	137	139	151	183	157
<i>Female</i>	96	87	111	91	97	106	129	99
<i>Male</i>	43	38	49	44	42	44	54	58
<b>Tests per 100 000 population<sup>2</sup></b>	1484	1432	1624	1530	1597	1564	1750	1714

<sup>1</sup>Total includes cases where sex is not reported

<sup>2</sup>Denominator = Statistics New Zealand mid-year population estimates

### Number of lab confirmed gonorrhoea cases (female, male and total population) and number of tests per 100 000 population, July 2016 to June 2018

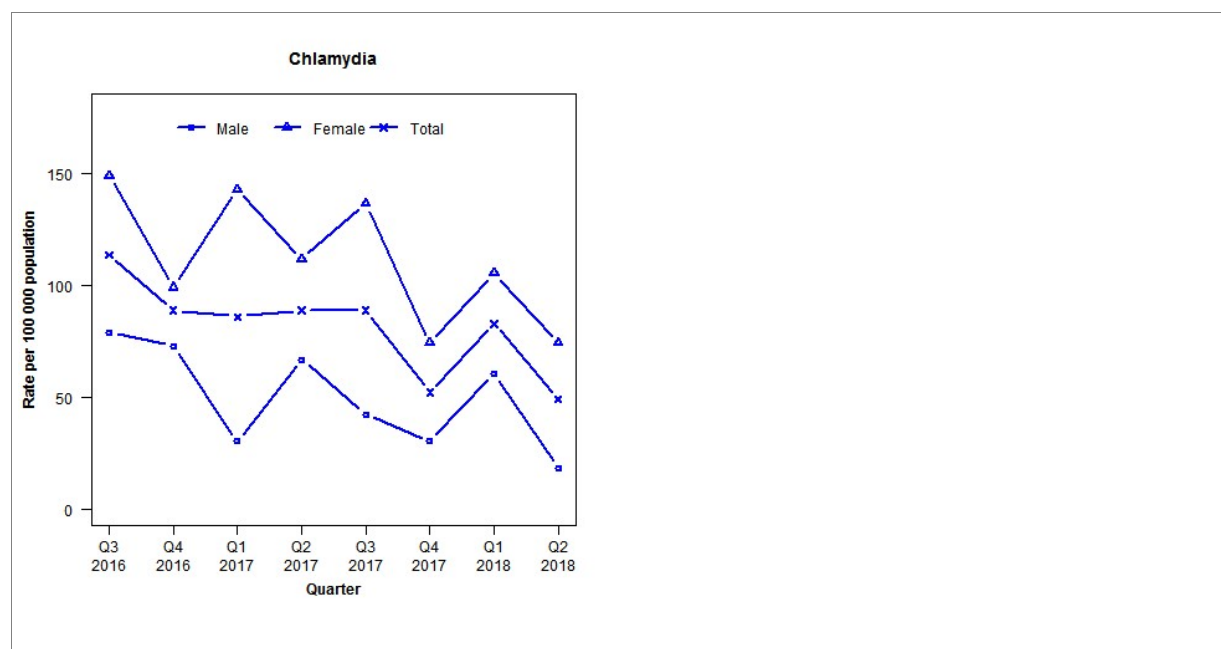
	Q3 2016	Q4 2016	Q1 2017	Q2 2017	Q3 2017	Q4 2017	Q1 2018	Q2 2018
<b>Number of lab-confirmed cases<sup>1</sup></b>	9	6	8	11	7	13	19	16
<i>Female</i>	3	2	7	3	3	6	12	3
<i>Male</i>	6	4	1	8	4	7	7	13
<b>Tests per 100 000 population<sup>2</sup></b>	1486	1437	1631	1532	1599	1569	1756	1720

<sup>1</sup>Total includes cases where sex is not reported

<sup>2</sup>Denominator = Statistics New Zealand mid-year population estimates

## Laboratory surveillance of chlamydia and gonorrhoea: April - June 2018

Quarterly chlamydia and gonorrhoea rates (male, female and total<sup>1</sup> population), July 2016 to June 2018



<sup>1</sup>Total includes cases where sex is not reported

Denominator = Statistics New Zealand mid-year population estimates

Note: Data processing methods allow for exclusion of repeat tests. Gonorrhoea rates are not presented as there are fewer than five cases in all quarters.

### Number of lab confirmed chlamydia cases (male, female and total population) and number of tests per 100 000 population, July 2016 to June 2018

	Q3 2016	Q4 2016	Q1 2017	Q2 2017	Q3 2017	Q4 2017	Q1 2018	Q2 2018
<b>Number of lab-confirmed cases<sup>1</sup></b>	37	29	28	29	29	17	27	16
<i>Female</i>	24	16	23	18	22	12	17	12
<i>Male</i>	13	12	5	11	7	5	10	3
<b>Tests per 100 000 population<sup>2</sup></b>	1564	1481	1506	1451	1595	1377	1666	1331

<sup>1</sup>Total includes cases where sex is not reported

<sup>2</sup>Denominator = Statistics New Zealand mid-year population estimates

### Number of lab confirmed gonorrhoea cases (female, male and total population) and number of tests per 100 000 population, July 2016 to June 2018

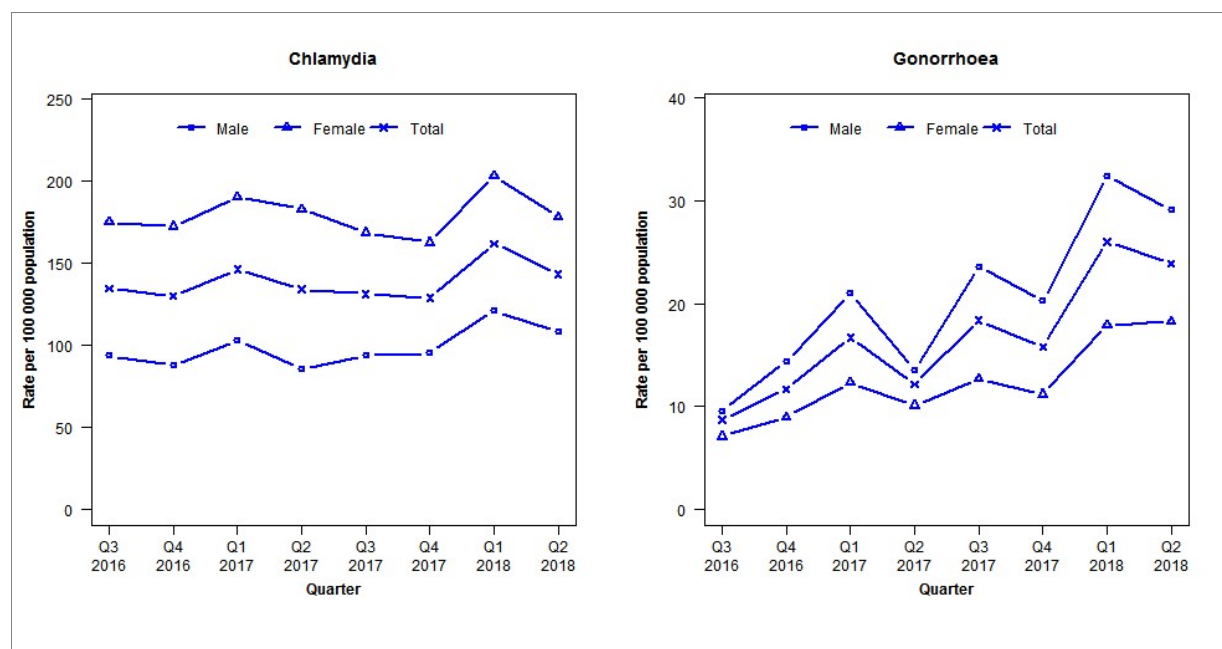
	Q3 2016	Q4 2016	Q1 2017	Q2 2017	Q3 2017	Q4 2017	Q1 2018	Q2 2018
<b>Number of lab-confirmed cases<sup>1</sup></b>	1	2	0	1	1	3	2	0
<i>Female</i>	1	1	0	1	0	2	1	0
<i>Male</i>	0	1	0	0	1	1	1	0
<b>Tests per 100 000 population<sup>2</sup></b>	1564	1481	1506	1451	1595	1377	1666	1331

<sup>1</sup>Total includes cases where sex is not reported

<sup>2</sup>Denominator = Statistics New Zealand mid-year population estimates

## Laboratory surveillance of chlamydia and gonorrhoea: April - June 2018

Quarterly chlamydia and gonorrhoea rates (male, female and total<sup>1</sup> population), July 2016 to June 2018



<sup>1</sup>Total includes cases where sex is not reported

Denominator = Statistics New Zealand mid-year population estimates

Note: Data processing methods allow for exclusion of repeat tests.

### Number of lab confirmed chlamydia cases (male, female and total population) and number of tests per 100 000 population, July 2016 to June 2018

	Q3 2016	Q4 2016	Q1 2017	Q2 2017	Q3 2017	Q4 2017	Q1 2018	Q2 2018
<b>Number of lab-confirmed cases<sup>1</sup></b>	724	699	788	722	706	693	872	772
<i>Female</i>	468	461	509	489	451	435	543	476
<i>Male</i>	254	238	279	232	254	258	328	294
<b>Tests per 100 000 population<sup>2</sup></b>	2298	2132	2441	2322	2317	2231	2645	2562

<sup>1</sup>Total includes cases where sex is not reported

<sup>2</sup>Denominator = Statistics New Zealand mid-year population estimates

### Number of lab confirmed gonorrhoea cases (female, male and total population) and number of tests per 100 000 population, July 2016 to June 2018

	Q3 2016	Q4 2016	Q1 2017	Q2 2017	Q3 2017	Q4 2017	Q1 2018	Q2 2018
<b>Number of lab-confirmed cases<sup>1</sup></b>	47	63	90	66	99	85	140	129
<i>Female</i>	19	24	33	27	34	30	48	49
<i>Male</i>	26	39	57	37	64	55	88	79
<b>Tests per 100 000 population<sup>2</sup></b>	2907	2658	3023	2887	2902	2708	3192	3105

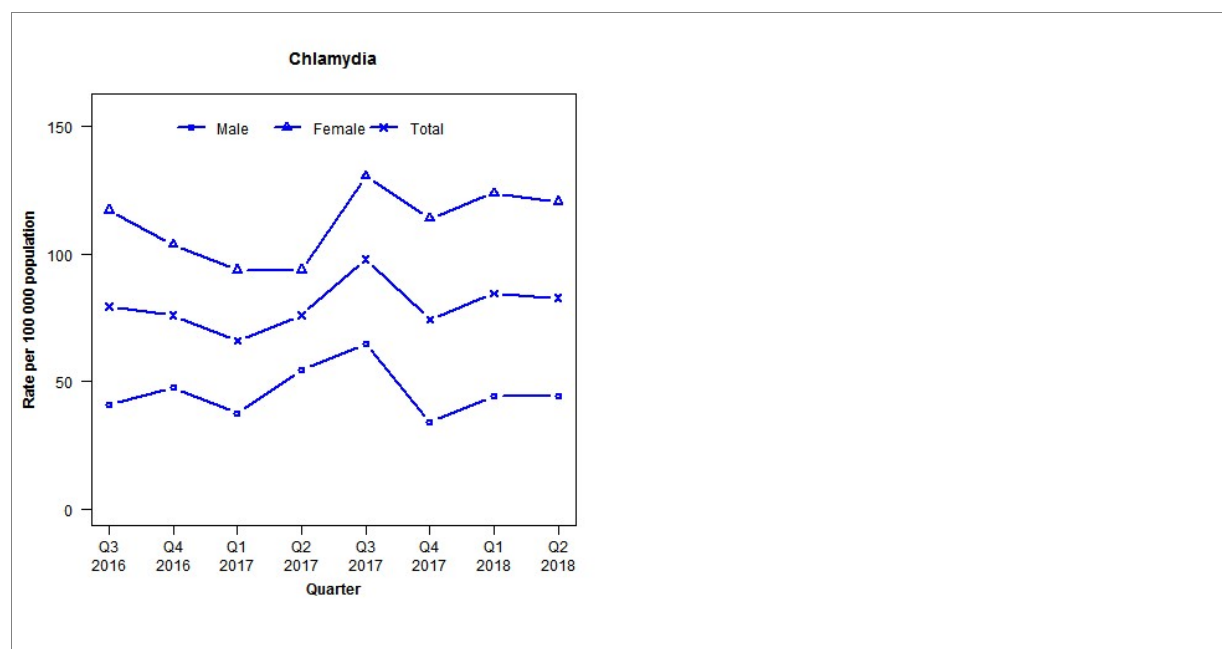
<sup>1</sup>Total includes cases where sex is not reported

<sup>2</sup>Denominator = Statistics New Zealand mid-year population estimates



## Laboratory surveillance of chlamydia and gonorrhoea: April - June 2018

Quarterly chlamydia and gonorrhoea rates (male, female and total<sup>1</sup> population), July 2016 to June 2018



<sup>1</sup>Total includes cases where sex is not reported

Denominator = Statistics New Zealand mid-year population estimates

Note: Data processing methods introduced allow for exclusion of repeat tests. Gonorrhoea rates are not presented as there are fewer than five cases in many quarters.

### Number of lab confirmed chlamydia cases (male, female and total population) and number of tests per 100 000 population, July 2016 to June 2018

	Q3 2016	Q4 2016	Q1 2017	Q2 2017	Q3 2017	Q4 2017	Q1 2018	Q2 2018
<b>Number of lab-confirmed cases<sup>1</sup></b>	47	45	39	45	58	44	50	49
<i>Female</i>	35	31	28	28	39	34	37	36
<i>Male</i>	12	14	11	16	19	10	13	13
<b>Tests per 100 000 population<sup>2</sup></b>	1450	1285	1423	1227	1393	1183	1332	1161

<sup>1</sup>Total includes cases where sex is not reported

<sup>2</sup>Denominator = Statistics New Zealand mid-year population estimates

### Number of lab confirmed gonorrhoea cases (female, male and total population) and number of tests per 100 000 population, July 2016 to June 2018

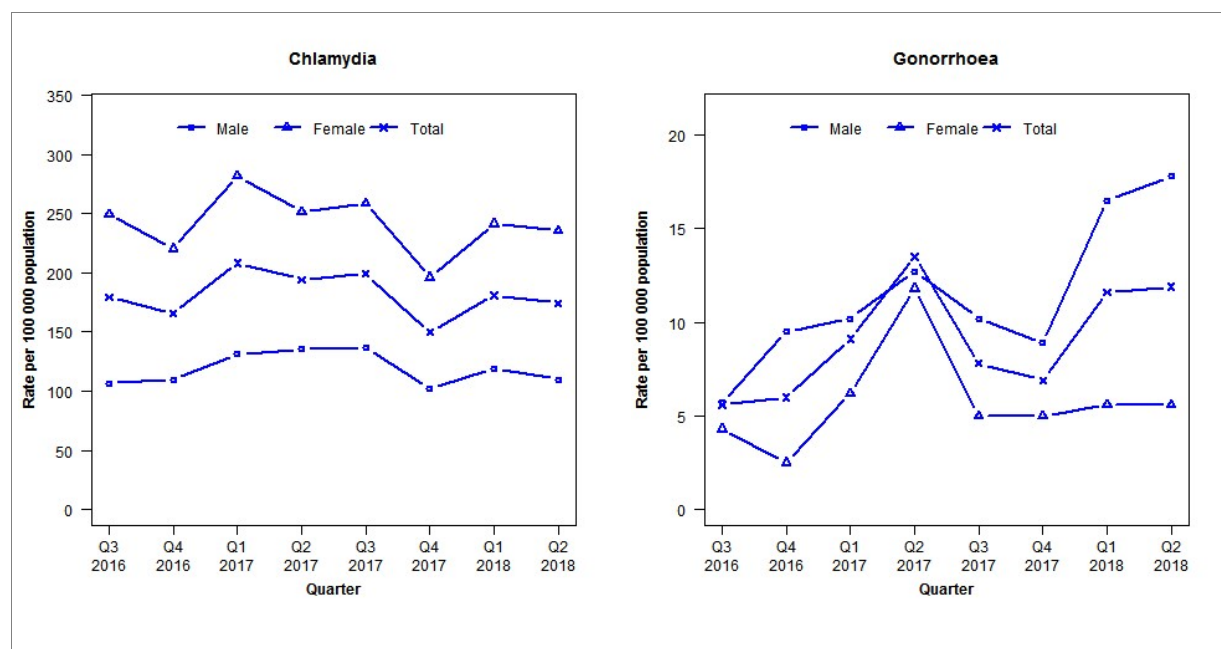
	Q3 2016	Q4 2016	Q1 2017	Q2 2017	Q3 2017	Q4 2017	Q1 2018	Q2 2018
<b>Number of lab-confirmed cases<sup>1</sup></b>	1	6	1	2	1	1	4	2
<i>Female</i>	0	2	1	1	1	1	0	1
<i>Male</i>	1	4	0	0	0	0	3	1
<b>Tests per 100 000 population<sup>2</sup></b>	1849	1607	1829	1601	1766	1464	1656	1464

<sup>1</sup>Total includes cases where sex is not reported

<sup>2</sup>Denominator = Statistics New Zealand mid-year population estimates

## Laboratory surveillance of chlamydia and gonorrhoea: April - June 2018

Quarterly chlamydia and gonorrhoea rates (male, female and total<sup>1</sup> population), July 2016 to June 2018



<sup>1</sup>Total includes cases where sex is not reported

Denominator = Statistics New Zealand mid-year population estimates

Note: Data processing methods allow for exclusion of repeat tests. Gonorrhoea rates for females are based on less than five cases in one quarter.

### Number of lab confirmed chlamydia cases (male, female and total population) and number of tests per 100 000 population, July 2016 to June 2018

	Q3 2016	Q4 2016	Q1 2017	Q2 2017	Q3 2017	Q4 2017	Q1 2018	Q2 2018
<b>Number of lab-confirmed cases<sup>1</sup></b>	571	528	664	619	634	477	577	555
<i>Female</i>	402	355	454	405	417	316	389	380
<i>Male</i>	168	173	207	213	215	161	187	173
<b>Tests per 100 000 population<sup>2</sup></b>	2487	2197	2429	2472	2560	2234	2593	2661

<sup>1</sup>Total includes cases where sex is not reported

<sup>2</sup>Denominator = Statistics New Zealand mid-year population estimates

### Number of lab confirmed gonorrhoea cases (female, male and total population) and number of tests per 100 000 population, July 2016 to June 2018

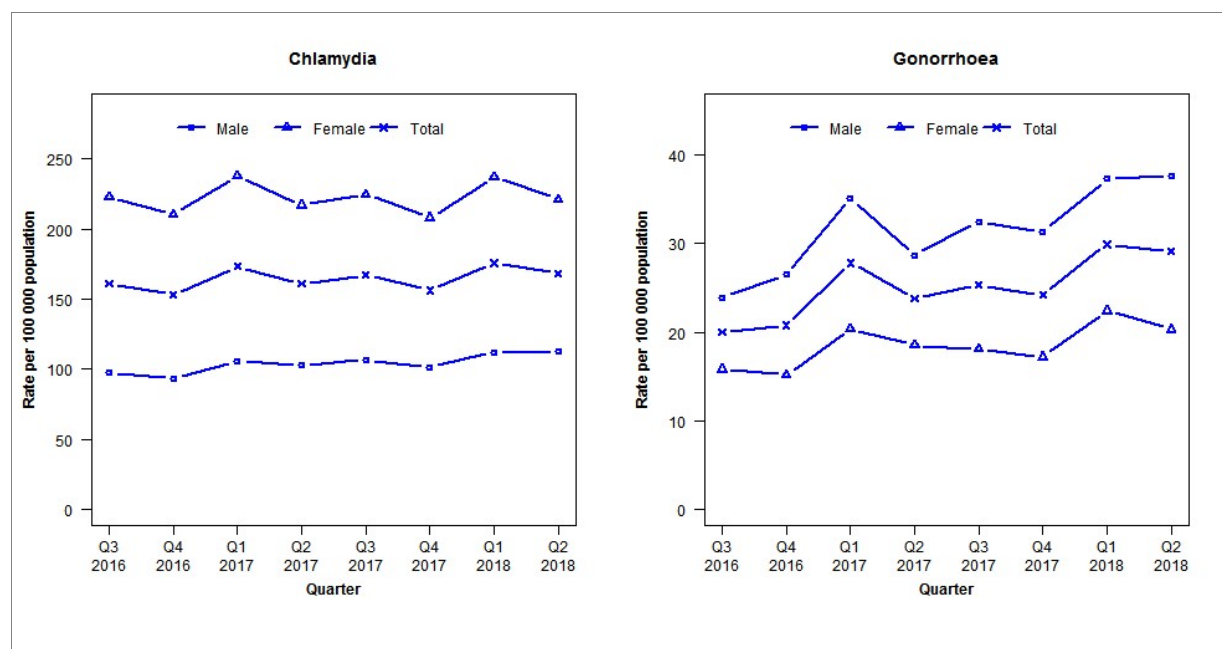
	Q3 2016	Q4 2016	Q1 2017	Q2 2017	Q3 2017	Q4 2017	Q1 2018	Q2 2018
<b>Number of lab-confirmed cases<sup>1</sup></b>	18	19	29	43	25	22	37	38
<i>Female</i>	7	4	10	19	8	8	9	9
<i>Male</i>	9	15	16	20	16	14	26	28
<b>Tests per 100 000 population<sup>2</sup></b>	2504	2213	2446	2486	2574	2247	2612	2677

<sup>1</sup>Total includes cases where sex is not reported

<sup>2</sup>Denominator = Statistics New Zealand mid-year population estimates

## Laboratory surveillance of chlamydia and gonorrhoea: April - June 2018

Quarterly chlamydia and gonorrhoea rates (male, female and total<sup>1</sup> population), July 2016 to June 2018



<sup>1</sup>Total includes cases where sex is not reported

Denominator = Statistics New Zealand mid-year population estimates

Note: Data processing methods allow for exclusion of repeat tests. NAAT (nucleic acid amplification testing) for gonorrhoea has been introduced in the majority of laboratories since 2012. Refer to DHB level reports for further details. Waikato Hospital data missing in previous 2017 quarterly reports (Q1–Q3) have been included for all quarters in 2017 in this report.

### Number of lab confirmed chlamydia cases (male, female and total population) and number of tests per 100 000 population, July 2016 to June 2018

	Q3 2016	Q4 2016	Q1 2017	Q2 2017	Q3 2017	Q4 2017	Q1 2018	Q2 2018
<b>Number of lab-confirmed cases<sup>1</sup></b>	7567	7175	8129	7555	7838	7324	8246	7894
<i>Female</i>	5305	5008	5665	5167	5352	4958	5650	5268
<i>Male</i>	2247	2154	2447	2372	2464	2345	2588	2606
<b>Tests per 100 000 population<sup>2</sup></b>	2272	2103	2333	2259	2342	2220	2470	2439

<sup>1</sup>Total includes cases where sex is not reported

<sup>2</sup>Denominator = Statistics New Zealand mid-year population estimates

### Number of lab confirmed gonorrhoea cases (female, male and total population) and number of tests per 100 000 population, July 2016 to June 2018

	Q3 2016	Q4 2016	Q1 2017	Q2 2017	Q3 2017	Q4 2017	Q1 2018	Q2 2018
<b>Number of lab-confirmed cases<sup>1</sup></b>	940	976	1305	1115	1187	1134	1403	1363
<i>Female</i>	377	361	485	441	432	409	533	483
<i>Male</i>	552	611	811	662	748	723	860	868
<b>Tests per 100 000 population<sup>2</sup></b>	2452	2257	2511	2433	2527	2391	2623	2616

<sup>1</sup>Total includes cases where sex is not reported

<sup>2</sup>Denominator = Statistics New Zealand mid-year population estimates